

The technical documentation of the venue that include stage, sound or lighting is not list as a contract. Contact the technical department for an update on this document.

## General Informations

### House

<b>Seating</b>	
seating capacity covered	2000
seating capacity covered (with proscenium)	1916
grassy lawn open air	4000

### Artist entrance

**1655 Base-De-Roc boulevard, Joliette (Qc)**

### Loading dock

<b>Loading platform dimensions</b>		
width	3,96m	13'-0"
<b>Acces on stage by a garage door</b>		
<b>Garage door</b>		
width	3,05m	10'-0"
height	2,44m	8'-0"

### Dressing rooms

<b>small dressing room - lobby level</b>		
2 persons	4	toilet and shower
1 person - studio / conductor	1	toilet and shower
<b>large dressing room* - lobby level</b>		
20 persons	2	sink - shower
10 persons	1	sink - shower

Nb: The toilets are at the same level

## Stage

### Stage description and dimensions

<b>Stage floor</b>		
stage floor covered with «cresson 3/4"» sheet		
<b>Allowed load on the stage floor</b>		
kg / m <sup>2</sup>	lbs/pi <sup>2</sup> - pound/foot <sup>2</sup>	
610	125	
<b>Proscenium opening</b>		
width	20,12m	66'-0"
height	7,47m	24'-6"
<b>Stage dimensions</b>		
Total width	37,49m	123'-0"
from center line to S.R. & S.L wall	18,75m	61'-6"
<b>Height clearance on stage</b>		
	18,29m	60'-0"
<b>Wing space, stage right &amp; left</b>		
width	8,69m	28'-6"
length	15,24m	50'-0"

## Rigging system

<b>Rigging point 2000lbs / each</b>	24	see «rigg» plot	
		8	
pipe's length		21,34 m	70'-0"
maximum loading capacity distributed over 70'-0"		362,87 Kg	800 lbs

\* see the line plot for house hang.

## Stage masking

### Stage curtains (black velvet)

<b>sets of legs</b>		5	
width		3,96 m	13'-0"
length		7,77 m	25'-6"
<b>borders</b>		4	
width		20,12m	66'-0"
height		4,88m	16'-0"
<b>border</b>		1	
width		20,12m	66'-0"
height		2,74m	9'-0"
<b>full back drops</b>		2	
width		21,34m	70'-0"
height		7,77m	25'-6"
<b>Germans (side curtain)</b>		10	
width		2,44m	8'-0"
height		7,77m	25'-6"

## Orchestra shell

<b>Orchestra shell</b>		1
------------------------	--	---

## Orchestra equipment

	92	music stand	
	60	stand light	
	1	Conductor's podium	
musician's chair	94	black	
stool	5	black	30"
utility chair	20	black	

# AMPHITHÉÂTRE FERNAND-LINSAY

## Risers

plateform	12	1,22 x 2,44m	4' x 8'	6"
	10			12"
	30			18"
	8			24"
	4			30"
	4			36"
plateform	2	1,22 x 1,22m	4' x 4'	6"
	2			12"
	2			18"
	2			24"
	2			30"
	1			36"
	1			42"
	Top			32
5		2' x 8'		
37		4' x 4'		
2		4' x 8'		
musician's platform	1	6"	3' x 6'	
accessories	2	1 marche / 1 step	6" x 42"	6"
	1	1 marche / 1 step	12" x 36"	6"
	2	1 marche / 1 step	24" x 24"	6"
	2	2 marches / 2 steps	24" x 24"	12"
	4	3 marches / 3 steps	24" x 24"	18"
conductor's podium	2	1,02 x 1,02m	40" x 40"	12"

## Tables

wood	4	1,83m	6' - 0"
	8	2,44m	8' - 0"

## Lifts

(battery ,ac)	1	GENIE	AWP-36S
	1	SKYJACK	3220J

## Step ladders

Aluminium	1	1.22m	4' - 0"
	2	2.43m	8' - 0"
	2	3.04m	10' - 0"
	2	3.66m	12' - 0"

**Lighting**
*Touring companies (120 / 208 volts)*

electrical room	1	200 A	<i>electrical room (100' feeder needed)</i>
electrical room	1	400 A	
UpStage right	1	200 A *	

*Stage lighting control*

console	1	Strand	PALETTE
	1	LG	22" screen size
<i>1 dimmer = 1 circuit</i>			
fixed dimmers	158	Strand	CD80
mobile dimmers	48	Strand	C-21
<i>Electronic soft patch</i>			

*Mobiles and fixed equipments*
**ETC projector**

mobile	30	Source Four	Zoom 15° x 30°	575w
mobile	60	Source Four	Zoom 25° x 50°	575w

**Selecon projector**

mobile	40	Rama fresnel standard		1kw
mobile	30	Arena fresnel standard		2kw
fixed	35	Arena fresnel standard		2kw

**Robert Juliat projector**

fixed	22	leko	Zoom 11° x 26°	1kw
fixed	32		Zoom 9° x 26°	2kw

**Altman projector**

mobile	72	Par 64		1kw
Bulbs available		Wide - Medium - Narrow - Very Narrow		

**follow spot**

fixed	2	ARAMIS 2500HMI - Robert Juliat		2500w
	2	Mires - Laser	Telrad	

*Lighting accessories*
**Gobo holder**

	30	Type A	Source four
	30	Type B	Source four
	36		Robert Juliat

**Iris**

	24	Source four	
	9	Robert Juliat	

**floor base**

		n/d	
--	--	-----	--

**lighting boom**

	6	1,83m	6'
--	---	-------	----

**Roscolux color filters**

# AMPHITHÉÂTRE FERNAND-LINDSAY

## Sound

### Touring companies (120 / 208 volts)

200 amps monophasé
--------------------

Stage Left

### Mixing boards

digital mixing audio board  
32 inputs  
with patch box 32 - 16 out

Digico
--------

SD9
-----

50 balanced lines (mobile on stage)

250' câble
------------

Split moniteur - 15'
----------------------

### House speaker system

house speaker system

4

Meyer
-------

MSL4-P
--------

2

Meyer
-------

CQ1-P
-------

2

Meyer
-------

SUB-650-P
-----------

field system

delay tower waterproof

8

Meyer
-------

JM1P-WP
---------

stage monitoring system

not available
---------------

audio processor

2

Meyer
-------

Galileo 616
-------------

### Playback & Recorder

CD player

1

DENON
-------

DN-C-635
----------

CD player / recorder

1

HHB
-----

Burnit plus
-------------

### Microphones

3

AKG
-----

C-414 B-ULS
-------------

2

--

C-535
-------

2

Audio Technica
----------------

ATM 350
---------

4

Neumann
---------

KM 184
--------

4

--

TLM 103
---------

4

Sennheiser
------------

MKH 40
--------

2

--

MKH416
--------

1

--

Beta 52
---------

1

--

Beta 57A
----------

2

--

Beta 58
---------

2

--

SM-58
-------

1

--

548-S
-------

1

--

565D -S
---------

4

--

Beta 98
---------

2

--

KSM 27
--------

4

--

MX 393/C
----------

1

--

MX 393/S
----------

2

Klark-Teknik
--------------

DN-100
--------

3

Whirlwind
-----------

IMP 2
-------

2 x match pair - 2 x standard

paging  
on/off Switch

cardio  
supercardio  
active DI  
passive DI

### Communications

fix stations located in the amphitheatre

CLEAR COM
-----------

SB-412A
---------

### Wireless intercom system

wireless intercom system (Transmit)

2

Telex
-------

BTR-800
---------

belt pack (Receiver)

8

BTR-800
---------

# AMPHITHÉÂTRE FERNAND-LINDSAY

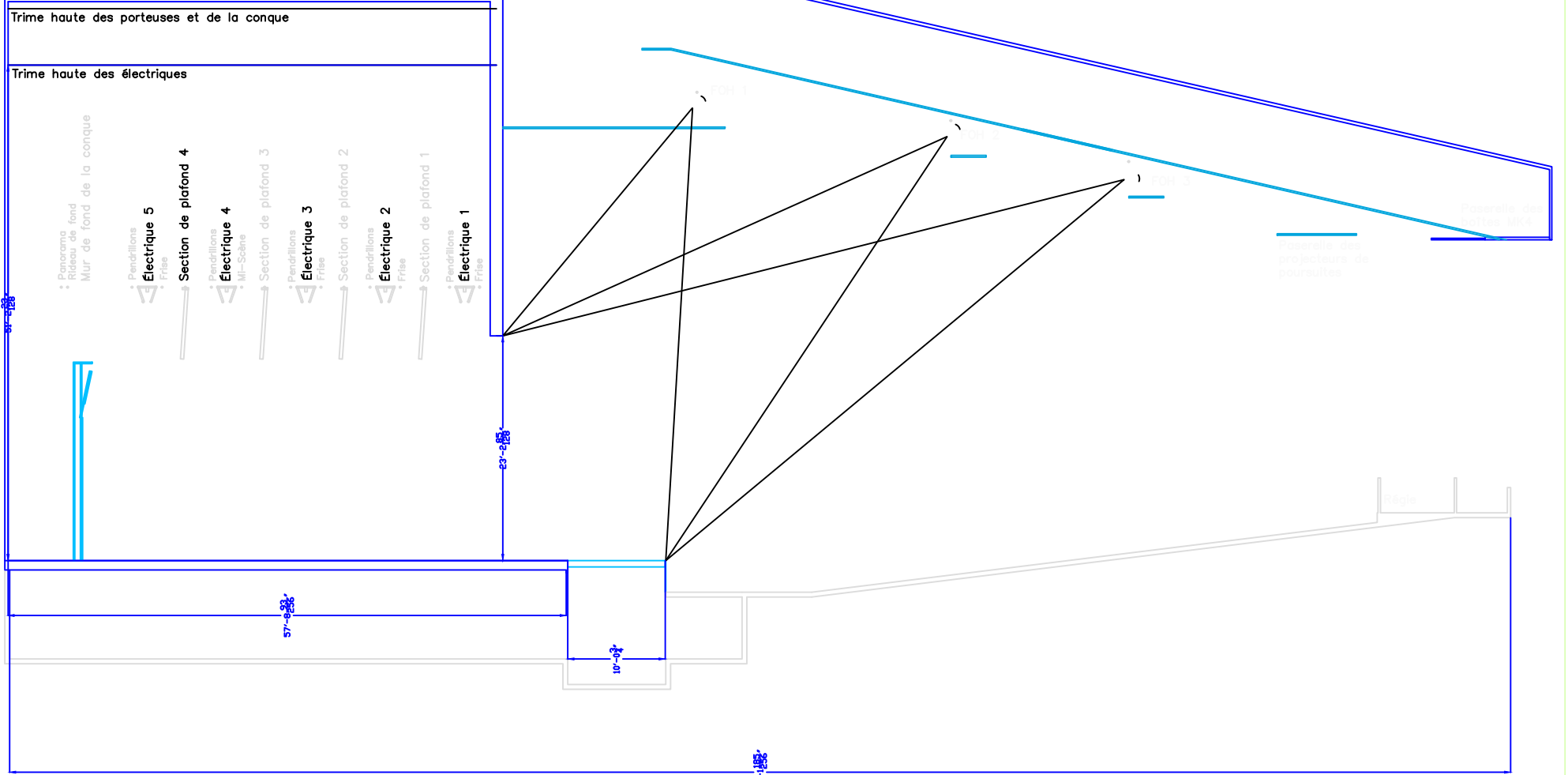
Mis à jour - Février 2014 / UPDATED - February 2014

## ACCROCHAGE STANDARD DU THÉÂTRE / HOUSE HANG

Préliminaire

Motorisation	Mètres / Meters	Pieds / Feet	Accrochage maison	Point d'attache	Charge
1	0,56m	1'10"	frise # 1	3 points	2000 lbs/ch.
2	0,91m	3'	LX # 1	3 points	2000 lbs/ch.
3	1,47m	4'10"	pendrion # 1	perche fixe	
4			plafond de conque # 1	plafond fixe	
5	2,74m	9'	frise # 2	perche fixe	
6	3,35m	11'	LX # 2	3 points	2000 lbs/ch.
7	3,91m	12'10"	pendrion # 2	perche fixe	
8			plafond de conque # 2	plafond fixe	
9	5.49m	18'	frise # 3	perche fixe	
10	6.10m	20'	LX # 3	3 points	2000 lbs/ch.
11	6.40m	21'	pendrion # 3	perche fixe	
12			plafond de conque # 3	plafond fixe	
13		25'11"	frise # 4 (Mi-scène)	3 points	2000 lbs/ch.
14		27'10"	LX # 4	3 points	2000 lbs/ch.
15		29'	pendrion # 4	perche fixe	
16			plafond de conque # 4	plafond fixe	
17		33'10"	frise # 5	perche fixe	
18		35'	LX # 5	3 points	2000 lbs/ch.
19		43'	pendrion # 5 / traveller	perche fixe	
20			Mur de fond - Conque	structure fixe au sol	
21			fond noir / rideau	3 points	2000 lbs/ch.





Trime haute des porteuses et de la conque

Trime haute des électriques

• Panorama  
• Rideau de fond  
• Mur de fond de la conque

• Pendillons  
• **Électrique 5**  
• Frite

Section de plafond 4

• Pendillons  
• **Électrique 4**  
• Mf-Scène

Section de plafond 3

• Pendillons  
• **Électrique 3**  
• Frite

Section de plafond 2

• Pendillons  
• **Électrique 2**  
• Frite

Section de plafond 1

• Pendillons  
• **Électrique 1**  
• Frite

FOH 1

FOH 2

FOH 3

Passerelle des projecteurs de poursuites

Passerelle des boîtes MCA

Régie

57-232

57-232

57-232

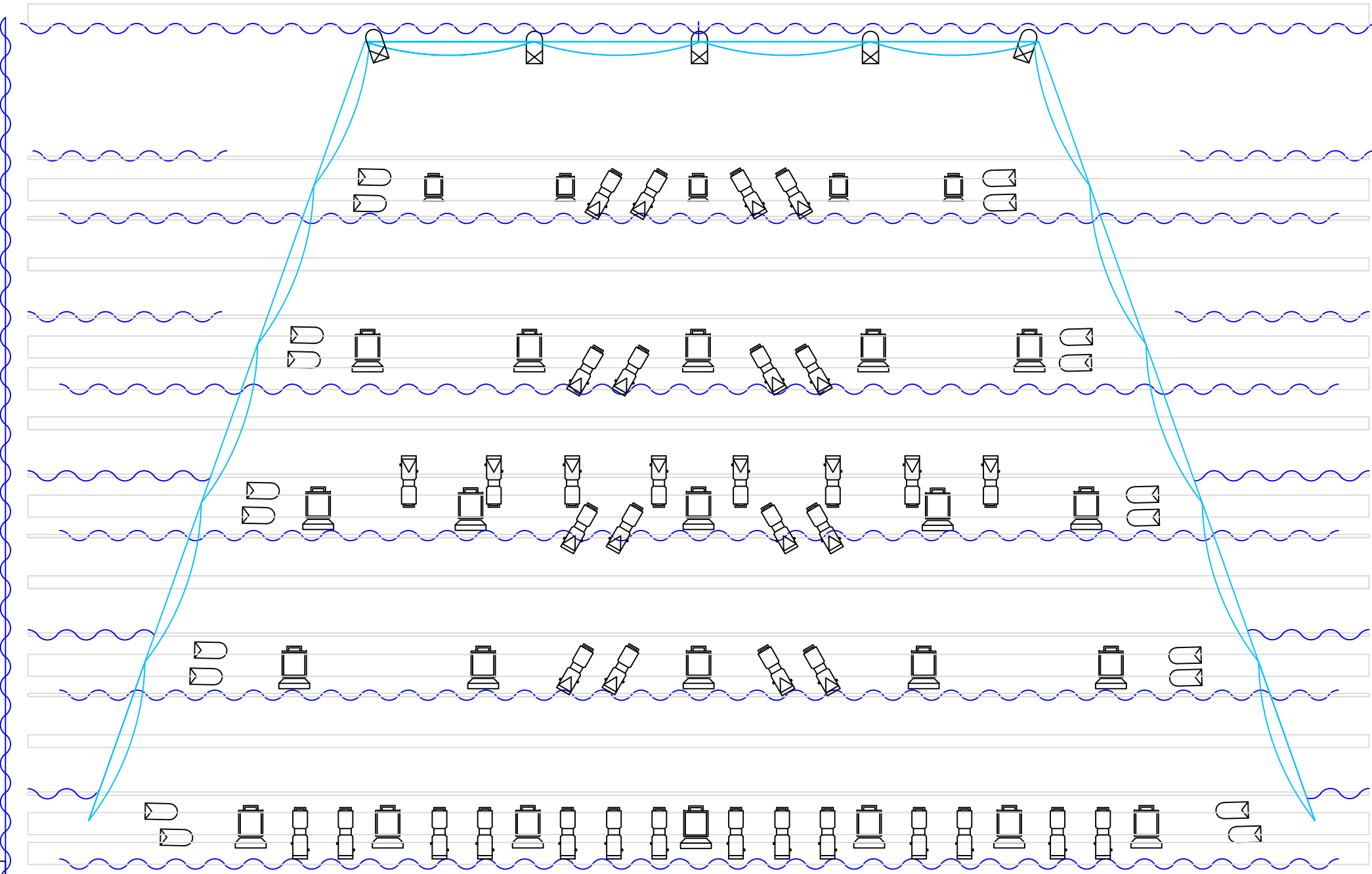
10-03

157-102



169~174  
Sol

157~162  
Sol



Rideau de fond

Mur de fond de la conc

Pendillons/Legs **FIXE**

Électrique/LX 5

Frise/Border **FIXE**

Section de plafond/Roo

Pendillons/Legs **FIXE**

Électrique/LX 4

Frise #4 et Mi-fond/Border

Section de plafond/Roo

Pendillons/Legs **FIXE**

Électrique/LX 3

Frise/Border **FIXE**

Section de plafond/Roo

Pendillons/Legs **FIXE**

Électrique/LX 2

Frise/Border **FIXE**

Section de plafond/Roo

Pendillons/Legs **FIXE**

Électrique/LX 1

Frise/Border/Rideau maison

151~156

Patch Son A

Bas et Haut

Saignée  
43~48