



SNC-LAVALIN
O&M

	Information Document	No. MSM-SCE-001
	TECHNICAL SPECIFICATIONS	Issue date: 01 08 2011 Revised on: 20 04 2022 Version No.: 3.0 (Ref. VF 12.0)
Released by: Technical Services Manager	Department: MSM – Technical Services	Approved by: Director of Operations

Maison symphonique de Montréal

Technical Specifications

TABLE OF CONTENTS

Description of the hall.....	3
Stage and orchestra equipment	4
Rigging system	5
Lighting equipment.....	7
Sound equipment	9
Reception and support areas for artists and production	14
Access and commodities	15
Miscellaneous	16

APPENDICES:

1. Stage plan.....	17
2. Orchestra risers plan	18
3. Motorized batten plan	20
4. Technical ceiling plan	21
5. Hall section plan.....	22
6. Permanent lighting plan.....	23
7. Speaker cluster plan.....	25
8. Floor plan / by level	27
9. Seating plan / by level	33
10.Pianos and organ.....	37
11.Orchestra equipment.....	38
12.OSM projection equipment	39
13.Required personal protective equipment	40

DESCRIPTION OF HALL

OVERVIEW

The Maison symphonique de Montréal is a hall primarily designed for classical music concerts. Built in a single-volume space with no proscenium or stage house, the Hall provides an intimate atmosphere for spectators, seated all around the stage. The walls are entirely covered with wood, allowing sound to be projected and reflected naturally during acoustic concerts, curtains and movable ceilings enable the Hall to be adapted to amplified shows.

KEY FEATURES

The Hall has a system of acoustic reflectors and curtains that enable the sound environment to be modified.

ACOUSTIC REFLECTORS

The system of acoustic reflectors consists of 25 panels (9 of which are mobile) located above the stage and extending above the spectator area.

CURTAINS

A system of curtains is used to cover the inside surfaces of the Hall during amplified events or as needed. When not in use, the curtains are concealed in architectural enclosures that are an integral part of the Hall's walls.

Each curtain section and mobile reflector can be adjusted individually using a computerized central control system.

CAPACITY (see plans – Appendix 8)

The Hall has a seating capacity of **2,117** spread out as follows:

PARTERRE LEVEL	902
Fixed seats	771 (including 54 removable)
Removable seats / Proscenium	94 (including 3 removable seats)
Removable seats / FOH mixing position	37
CORBILLE LEVEL	494
Fixed benches / choir	190
Removable benches / choir	39
Fixed seats	175 (including 8 removable seats)
Movable chairs	90
MEZZANINE LEVEL	327
Fixed seats	243 (including 8 removable seats)
Movable chairs	84
BALCONY LEVEL	394
Fixed seats	394

Note: at the balcony level, there is a gallery on each side of the hall with a capacity of 30 people standing, for a total of 60 people (not included in the hall capacity described above)

STAGE AND ORCHESTRAL EQUIPMENT

DESCRIPTION

The stage floor is made of grooved wood, with the frame resting on a concrete slab.

STAGE DIMENSIONS (see plan – Appendix 1)

Upstage width	17.03 m / 55'10"
Proscenium width	18.78 m / 61'7"
Depth (from the upstage wall to the apron edge)	14.60 m / 47'11"

The stage layout can be modified by removing the seats from the parterre in rows AA-BB-CC which are on an elevating platform. This space can thus serve as proscenium when the platform is raised to stage level, or as an orchestra pit when lowered one level below the parterre.

PROSCENIUM / ORCHESTRA PIT (see plan – Appendix 1)

Dimensions of stage elevating platform (may serve as proscenium)

Width	18.78 m / 61'7"
Depth (middle of elevating platform)	3.39 m / 10'9"

Space available for the orchestra pit *

Width (at widest point under the stage)	24.17 m / 79'3"
Depth (in the middle)	7.71 m / 25'3"
Height under the stage	2.11 m / 6'11"

* The orchestra pit has an estimated capacity of 55 musicians

CHOIR BENCHES

Rows A-B-C-D located behind and on each side of the stage on the corbeille level (dress circle) are equipped with fixed benches for spectators or a choir.

2 removable rows (AA-BB) can also be added on the stage to create 39 additional seats.

Total capacity: 229

STAGE RISERS (see plan & details – Appendix 2)

85 platforms, with the same finish as the stage floor (wood) can be laid out in a semi-circle and spread out over several different levels depending on the orchestra's needs.

(Row height: 150 mm, 250 mm, 450 mm, 750 mm and 950 mm)

SNC-Lavalin O&M is not responsible for the orchestra equipment, pianos and the organ found at the Maison symphonique de Montréal; however, a detailed list has been prepared by the OSM and PDA for reference.

ORCHESTRA EQUIPMENT

See detailed list – Appendix 11

PIANO(S)

See detailed list – Appendix 10

RIGGING SYSTEM

MOTORIZED BATTENS (see plan – Appendix 3)

The Hall is equipped with 7 motorized battens controlled by a computerized central system.

Batten A Mobile FOH catwalk connected to reflector #2 in the **Hall**. Load capacity (50 lbs / linear foot)

Notes:

- Access to reflector #2 is from a aerial basket located in the technical ceiling
- The height adjustment of the above batten is directly dependent on the height of the reflector

Any workers having to perform operations in this location must have taken the recognized training for height work – **certificate required** (See the *personal protective equipment required for the location – Appendix 11*)

Batten B Ladder batten located above the proscenium

Total load capacity: 1270 kg / 2800 lbs

Allowable concentrated load between two suspensions: 170 kg / 375 lbs or 60 lbs per linear foot

Batten C Ladder batten located over the stage

Total load capacity: 861 kg / 1900 lbs

Allowable concentrated load between two suspensions: 170 kg / 375 lbs or 60 lbs per linear foot

Batten D U-shaped box truss batten over the back and sides of the stage

Total load capacity: 1270 kg / 2800 lbs

Allowable concentrated load: 900 kg / 2000 lbs or 62.5 lbs per linear foot

Notes:

- certain rules need to be followed regarding the distribution of loads on the above batten
- *The OSM projection screen is permanently attached to the above batten*

Batten E Ladder batten located above the choir benches upstage

Total load capacity: 907 kg / 2000 lbs

Allowable concentrated load between two suspensions: 170 kg / 375 lbs or 60 lbs per linear foot

Batten F Ladder batten located above the mezzanine level on stage right

Total load capacity: 861 kg / 1900 lbs

Allowable concentrated load between two suspensions: 170 kg / 375 lbs or 60 lbs per linear foot

Batten G Ladder batten **locate**d above the mezzanine level on stage left

Total load capacity: 861 kg / 1900 lbs

Allowable concentrated load between two suspensions: 170 kg / 375 lbs or 60 lbs per linear foot

The total load capacity provided here for each batten takes into account the weight of the permanent equipment already in place on each one.

FIXED BATTENS

Permanent bars with a load capacity of 60 lbs per linear foot were installed in the Hall at the following locations:

- Under the mezzanine and balcony levels over the entire length of the auditorium on each side
- Across from the balconies at the mezzanine and balcony levels

Any workers having to perform operations at these locations must have first taken recognized training for height work – **certificate required** (*See the personal protective equipment required for the location – Appendix 11*)

SETUPS FOR TEMPORARY RIGGING (see plan – Appendix 4)

There are 78 openings of 6” in diameter in the technical ceiling

Note: certain openings may be difficult to access. Please refer to the plan indicated

RIGGING EQUIPMENT

- 4 CHAIN MASTER / 1000-kg motors
- 4 mobile supports for motor rigging
- 1 remote control
- 1 CAM-LOCK / TL 30A electrical distribution panel
- 1 Socapex 419 motor control cable
- 2 50’ Socapex cables (motor)
- 1 100’ Socapex cable (motor)
- 1 Socapex multi-connector with Twist-Lock connectors (motor)
- 4 25’ TL cables (motor)
- 36 5/8” shackles
- 36 1/2” shackles
- 17 3’ slings

All suspension projects must first be approved by SNC-Lavalin O&M

Safety procedures apply for all work being performed in the technical ceiling
- Safety hats must be worn -

LIGHTING EQUIPMENT

DIMMERS

- 5 ETC cabinets with 96 2.4-kW dimmers
(4 cabinets for the stage and 1 for the Hall architectural lighting)

DISTRIBUTION PANELS

The electrical distribution panels are located throughout the Hall and house the 334 20A/120V dimmed circuits reserved for use by production, in addition to the 130 20A/120V non-dimmed sockets and the entire E-DMX network.

CONSOLE

- 1 ETC Eos TI with backup unit / located in the lighting booth (parterre level)
- 1 remote control for the stage

** The console is connected to the network (exclusive to lighting) and a wireless router is used for the network*

***An iPad (shared with the sound crew) is available to control the console remotely (EOS / ETC application)*

The Hall's architectural lighting can be controlled via one of the touch screens (available in the auxiliary booth and lighting booth) or through the EOS console.

A basic configuration was entered in the EOS console; therefore, all the basic plan equipment, Warps and Hall architectural lighting projectors are already assigned (patched) and ready for use. *(Detailed documentation is available upon request)*

FOLLOW SPOTS

- 3 Robert-Juliat Aramis 2500W / located in the Hall ceiling (access from the technical ceiling)

PERMANENT PROJECTORS / BASIC PLAN FOR ORCHESTRAS (see plan – Appendix 6)

- 24* 15°-30° zoom ETCS4LEDS2THD / on batten A (FOH)
- 104 ETC-575W PAR (with 85 medium and 19 narrow lenses) / on battens B-C-D-E-F-G
- 4 Fresnel Selecon-750W with shutters / on motorized batten E
- 6 SolarFrame TheaterHigh End System (7°-42°) / on the lateral fixed battens
- 11 SolarFrame TheaterHigh End System (7°-42°) / on motorized battens C and E
- 4 15°-30° zoom ETCS4LEDS2THD / on motorized battens F and G
- 4 15°-30° zoom ETCS4LEDS2THD / on balcony level booms (exclusive to OSM)
- 2 25°-50° 15°-30° zoom ETCS4LEDS2THD / on balcony level booms
- 14 15°-30° zoom ETCS4LEDS2THD / in the loges – mezzanine level
- 4 25°-50° zoom ETCS4LEDS2THD / in the loges – mezzanine level
- 29** 14° ETCS4LEDS2THD / across from the balconies – mezzanine and balcony levels

** 20 of the above 24 projectors can be set based on production needs; the other four are permanently set for the OSM's needs (marked with red tape).*

*** 25 of the above 29 projectors are only suspended and not part of the basic plan. They can therefore be adjusted based on production needs*

MOBILE PROJECTORS

12	15°-30° zoom ETCS4LEDS2THD
12	25°-50° zoom ETCS4LEDS2THD
12	14° ETCS4LEDS2THD
20	Fresnel Selecon-750W (with shutters)
20	Skycyc 4 Atlman-500W

* The Hall has one replacement unit (SolarFrame Theatre) and two PAR ETC-575W units that can also be used, when available, this equipment is not part of the total number of pieces of equipment available to users.

ACCESSORIES FOR TRADITIONAL PROJECTORS

48	Iris
48	"B" gobo holders for ETC / Standard
4	"B" gobo holders for ETC /Glass

AVAILABLE GOBOS (APOLLO)

12	MS-2136	6	MS-3569
13	MS-1027	6	MS-2134
12	MS-1018	6	MS-2139
16	MS-2260	5	MS-2231
6	MS-2370	5	MS-1042
6	MS-1017		

ALSO AVAILABLE FOR MOBILE RIGGING

18	boom stands
18	10' steel tubes
12	6' steel tubes
8	3' steel tubes
12	threaded steel couplers
40	12" side arms
11	18" side arms
24	ground stands

AVAILABLE COLOUR FILTERS

Lee 019	Lee 106	Lee 128	Lee 135	Lee 147	Lee 179	Lee 216
Lee 026	Lee 119	Lee 132	Lee 136	Lee 152	Lee 180	Lee 261
Lee 101	Lee 124	Lee 134	Lee 139	Lee 164	Lee 195	

SOUND EQUIPMENT

MIXING CONSOLE

- 1 Yamaha CL3 digital console with RIO 3224-D2/ sound booth – Parterre level
- 1 DiGiCo SD-8 digital console / mobile with DIGIRack (48 inputs – 16 outputs) at the stage level, and one MINI-DIGIRack in the amplifier room (Optocore option is installed / fibre optics)

* Both consoles are connected to the network (exclusive to sound) and a wireless router is used for the network

** An iPad (shared with the lighting crew) is available to remotely control the consoles (DIGICO SD8 / YAMAHA LS9 application)

MOBILE REPRODUCTION AND EFFECTS CABINETS (for the control room and hall)

- 1 Tascam CD500B CD player
- 1 Compact Flash Marantz PMD570 recorder
- 1 TC Electronic 4000 main reverb
- 1 Lexicon PCM92 auxiliary reverb
- 1 Eventide Eclipse 4.0 multi-effects processor

HALL REINFORCEMENT SYSTEM

Three loudspeaker clusters suspended on motors can be lowered from the technical ceiling as needed and set up using the computerized central control system.

SIDE CLUSTER / RIGHT

- 6 JM-1P Meyer
- 1 700HP Meyer

MIDDLE CLUSTER

- 9 JM-1P Meyer
- 3 UPA-1P Meyer
- 1 UPQ-1P Meyer

SIDE CLUSTER / LEFT

- 6 JM-1P Meyer
- 1 700HP Meyer

Permanently installed in the Hall:

- 11 D&B E6 chassis at the front of the stage / front fill
- 11 D&B E6 chassis at the front of the proscenium / front fill
- 2 Renkus Hein Iconix IC-8 chassis / for the parterre
- 2 Renkus Hein Iconix IC-16 chassis / for the choir section
- 58 AD-C152ST QSC chassis (ceiling fixtures) / distributed throughout the Hall
- 4 UPJ-1P Meyer chassis / for behind the balcony
- 6 K-Array KV-50 chassis / for the sections on the side of the balcony

Removable for surround sound effects:

- 12 UB-12 EAW chassis

THE MAISON SYMPHONIQUE DE MONTRÉAL IS A SHOEBOX-TYPE HALL BUILT IN A SINGLE VOLUME SPACE WITH SEATING ALL AROUND THE STAGE.

THIS LAYOUT MUST BE CONSIDERED WHEN AN AMPLIFIED EVENT IS HELD AND AS A RESULT, THE SOUND MUST BE ADJUSTED ACCORDINGLY SINCE A TRADITIONAL APPROACH AS IN STANDARD CONCERT HALLS WOULD NOT BE APPROPRIATE.

THEREFORE, THE FOLLOWING IS SUGGESTED:

For areas in front of the stage

1. Use the middle cluster to first determine the required voice level, and then supplement it with the side clusters to ensure consistent sound coverage
2. Use the side clusters to support certain accompanying instruments based on the stage sound volume

For the area around and behind the stage*

This area is covered solely by the speakers in the middle cluster of a mono program and must be handled differently from the front:

1. Adjust sound level
2. Determine what needs to be added due to the proximity of the spectators to the stage in relation to what they can already hear without amplification

*** However, it may be difficult to achieve an adequate sound rendition for spectators in this area in the following situations:**

- If there are any monitors on stage and depending on the volume used for each one
- If any Plexiglas is used, which would create a rebound sound effect toward the spectators in this area and therefore create auditory confusion

For areas directly parallel to the side clusters

(loges 101 and 102 at the corbeille level and loges 203 and 204 at the mezzanine level)

These areas are not aligned with the speakers, so these seats must be sold carefully in coordination with the User's technical team.

An iPad is available that allows the sound designer to work remotely by moving through the hall to make the necessary adjustments

MOBILE MONITORS AND CHASSIS

- 4 Meyer MJF-212A enclosures
- 2 Meyer CQ-2 enclosures
- 4 Meyer UPM-1P enclosures

DIGITAL RECORDING EQUIPMENT

- 1 HP X360 Spectre 17 Laptop (Pyramix Pro, Reaper)
- 1 Digiface Dante Soundcard
- 1 Rednet AM 2 (monitoring)
- 2 Genelec 8130 A audio monitors

Note: MADI56, 48Khz / 48 channels

MICROPHONES

- | | | | | | |
|---|----------------------------------|----|--------------------|----|-----------------|
| 4 | Sennheiser e835 | 4 | Sennheiser MD421 | 5 | Sennheiser e912 |
| 1 | Sennheiser e935 | 16 | Sennheiser MKH8020 | 4 | Sennheiser e905 |
| 2 | Sennheiser e902 | 4 | Sennheiser MKH8040 | 2 | Neumann TLM67 |
| 3 | Sennheiser e604 | 4 | Sennheiser MKH800 | 10 | Neumann KM140 |
| 1 | Sennheiser ME36 (for the podium) | | | | |

WIRELESS MICROPHONES

- 1 Shure ULXD4Q wireless 4 channel receiver, *permanently installed in patch room*
- 4 Shure ULXD2 handheld transmitters with SM 58 capsules
- 4 Shure ULXD1 bodypack transmitters with 4 B-53 (beige) headworn microphones (omni)
- 2 DPA 4088 headworn microphones

DI BOX

- 2 Radial J48 (active)
- 3 Radial Pro D1 (passive)

MISCELLANEOUS & ACCESSORIES

- 1 Whirlwind Presspower 2 active press box

- 4 50' multi-pair cables
- 4 24 in patch boxes
- 4 12 in / 4 out patch boxes (*one of which is permanently installed in the technical ceiling*)
- 4 multipair cables with 12/4 fanout (*with one permanently installed in the technical ceiling*)
- 2 multipair cables fan-out 48 plugs
- 2 multipair cables fan-out 48 sockets

MISCELLANEOUS & ACCESSORIES

- 19 K&M 211 boom arms
- 13 K&M tripods
- 6 12" Atlas MS20E standard stands
- 8 10" Atlas MS12E standard stands
- 6 10" Atlas DMS-10E and DMS-7E short stands
- 4 6" Atlas DS-7E table stands
- 2 K&M 233 tripods

MOBILE SOUND SYSTEM

- 1 Yamaha LS9-16 console
- 2 Bose L1/PS1 Model II enclosures
- 1 Tascam CD500B CD players
- 1 Denon 250Ui Bluetooth receiver
- 1 Sennheiser e935 microphone
- 1 K&M tripod with K&M 211 boom arm

CONNECTION PANELS

Panels located all around the stage, in the booths and in the technical ceiling provide various connections (*a descriptive list of each panel that also indicates its location is available upon request*):

Toward the patch room

- Multi-pin or XLR analog connections
- Fibre-optic digital connections (Opticalcon connector) / or RJ-45 (cat 6)

To the communications room

- Video connections (supports HD-SDI)
- Intercom connection (Clear-Com 4 channels)

CONTROL DESKS

Permanent (located in the auxiliary booth on stage right):

- 1 4-channel RM704 Clear-Com stand
- 1 Marshall C-R82DP-2C dual video monitor
- 1 Fostex RM 2 audio monitor
- 1 call system (Soundweb) for the loges, booths, foyers and support spaces
- 1 Pliant CCU-22 (900 MHz) 2-channel wireless intercom connected to the Clear-Com system
- 1 CC-26K headset

1 mobile unit (control booth) containing:

- 1 4-channel RM704 Clear-Com stand
- 1 Fostex RM 2 audio monitor
- 1 HS-6 phone

Also available:

- 1 Clear-Com RM704 4-channel station
- 1 Fostex RM2 audio monitor

PERMANENT EQUIPMENT – COMMUNICATION SYSTEM

In addition to the auxiliary control booth, communication equipment is left permanently at the following locations:

Lighting booth	Projection room	Recording booth
Sound booth	Follow room	Left and right wings
Patch room	General control booth	

MOBILE EQUIPMENT – COMMUNICATION SYSTEM

4 Pliant CCu-22-900 belt packs with 4 CC-95 Clear-Com 1 ear headset

*Note: Surplus inventory is also available upon request:
(Clear-Com KB-702 table stands, Clear-Com RS-602 2-channel beltpack, Clear-Com RS-601 single-channel beltpack, Clear-Com CC-260 and CC-95 headsets)*

MOBILE EQUIPMENT – VIDEO

2 TOTE VISION LCD-1901 HD/L/R monitors
3 Ikegami ICD-809 cameras

VIDEO RETURN SYSTEM FOR THE BACKSTAGE

1 Panasonic AW-HE100N camera / mounted across from the balcony at the mezzanine level (adjustable position and zoom)

LCD screens installed upstage, in the loges and in the support spaces are used.

VIDEO RETURN SYSTEM IN THE FOYERS

10* LCD screens (2x 60" and 8x 26") mounted horizontally / installed permanently at the main entrance and on the foyer floors
8 LCD screens (31") positioned vertically / installed permanently on the foyer floors

** Transmission is possible on these 10 horizontal screens; however, priority is given to the hall's return video signal during concerts.*

Promotional or other content is broadcast from the Place des Arts multimedia booth.

For all information regarding size, deadline and other details, please contact:

Philippe Larocque

Multimedia Producer and Digital Display System Operator Marketing,
Communications and Development

Place des Arts

plarocque@pda.qc.ca

514.285.4276 / 514.918.0378

RECEPTION AND SUPPORT AREAS FOR ARTISTS AND PRODUCTION

SOLOIST AND MUSICIAN'S DRESSING ROOMS – Corbeille level (one level above the stage)

- 2 dressing rooms for the principal soloist with makeup station, toilet, shower and small refrigerator
- 5 dressing rooms for soloists, with makeup station, toilet, shower and sofa
- 3 musician dressing rooms with one makeup station, toilet, shower and small sofa

CHOIR DRESSING ROOMS – Balcony level (three levels above the stage)

Space that includes common areas consisting of:

- 1 women's changing room with toilets and showers
- 1 men's changing room with toilets and showers
- 27 fixed makeup stations

WARMUP ROOM – Mezzanine level (two levels above the stage)

Multipurpose space that can be set up as needed.

- Length 9.30 m / 30'6"
- Width 5.93 m / 19'5"
- Height 5.60 m / 18'4"

*Due to stored material (ex. the OSM octobass) the available space is:

- Length 18'9"
- Width 12'10"

GREEN ROOM – Corbeille level (one level above the stage)

Space with sofas with direct access to the Hall foyer.

MUSICIAN'S ROOM – Mezzanine level (two levels above the stage)

Lounge with tables, chairs, sofas and kitchen area.

Notes: A return sound system, paging system and return video system are used for the backstage and all the production support areas.

ACCESS AND COMMODITIES

STAGE DOOR

The stage door is located at **1800 Saint-Urbain**. (Postal code H2X 0S1)

The Hall's security desk is located at this entrance, this is where access control takes place.

DELIVERY DOCK

The delivery dock for the Hall is located at **120 De Maisonneuve West**. (Postal code H2X 1X9)

The loading and unloading area comprises two main inside docks, both equipped with a dock leveller:

West Main Dock

Door clearance	4.36 m / 14'4"
Door width	3.53 m / 11'7"
Length of inside corridor	20.26 m / 66'5"

East Main Dock *

Door clearance	4.36 m / 14'4"
Door width	3.53 m / 11'7"
Length of inside corridor	20 m / 65'7"

* This dock is equipped with a LoMaster hydraulic dock lift 72" wide by 92" long

Load capacity: 10,000 lbs

Note: All equipment to be brought on stage must be able to pass through double doors 1.95 m / 6'4" wide by 2.37 m / 7'9" high.

FREIGHT ELEVATOR

A freight elevator with direct access to the delivery dock loading/unloading area is used to transport equipment to the various Hall levels

Load capacity: 5,400 kg / 12,000 lbs

Length	3.81 m / 12'6"
width	2.48 m / 8'2"
height	2,18 m / 7'2"

POWER SUPPLY PANELS

Additional power supply panels (with a camlock connector) are available at several locations in the Hall for equipment brought by Production:

Stage equipment

- 2 x 200A three-phase 120/208V (technical ceiling)
- 1 x 400A three-phase 120/208V (upstage right)

Lighting equipment

- 3 x 400A three-phase 120/208V (upstage right)
- 1 x 100A three-phase 120/208V (projection booth – Corbeille level)

Sound equipment * *insulated ground*

- 1 x 200A three-phase 120/208V (upstage left)
- 1 x 200A three-phase 120/208V (handling area – delivery dock)

MISCELLANEOUS

HOISTING EQUIPMENT

- 1 GENIE AWP-40 /AC aerial work platform
(for the stage: maximum working height of 46')
- 2 JLG LIFTPOD FS80 /DC aerial work platform
(for fixed battens under the mezzanine and balcony: maximum working height of 14')

LADDERS AND STEP LADDERS

- 1 32' Featherlite ladder
- 1 16' Featherlite ladder
- 1 4' Featherlite step ladder
- 1 6' Featherlite step ladder
- 2 8' Featherlite step ladders *(for fixed battens under the mezzanine – choir section)*
- 2 10' Featherlite step ladders

TOOLS

- 1 basic toolbox is available at all times

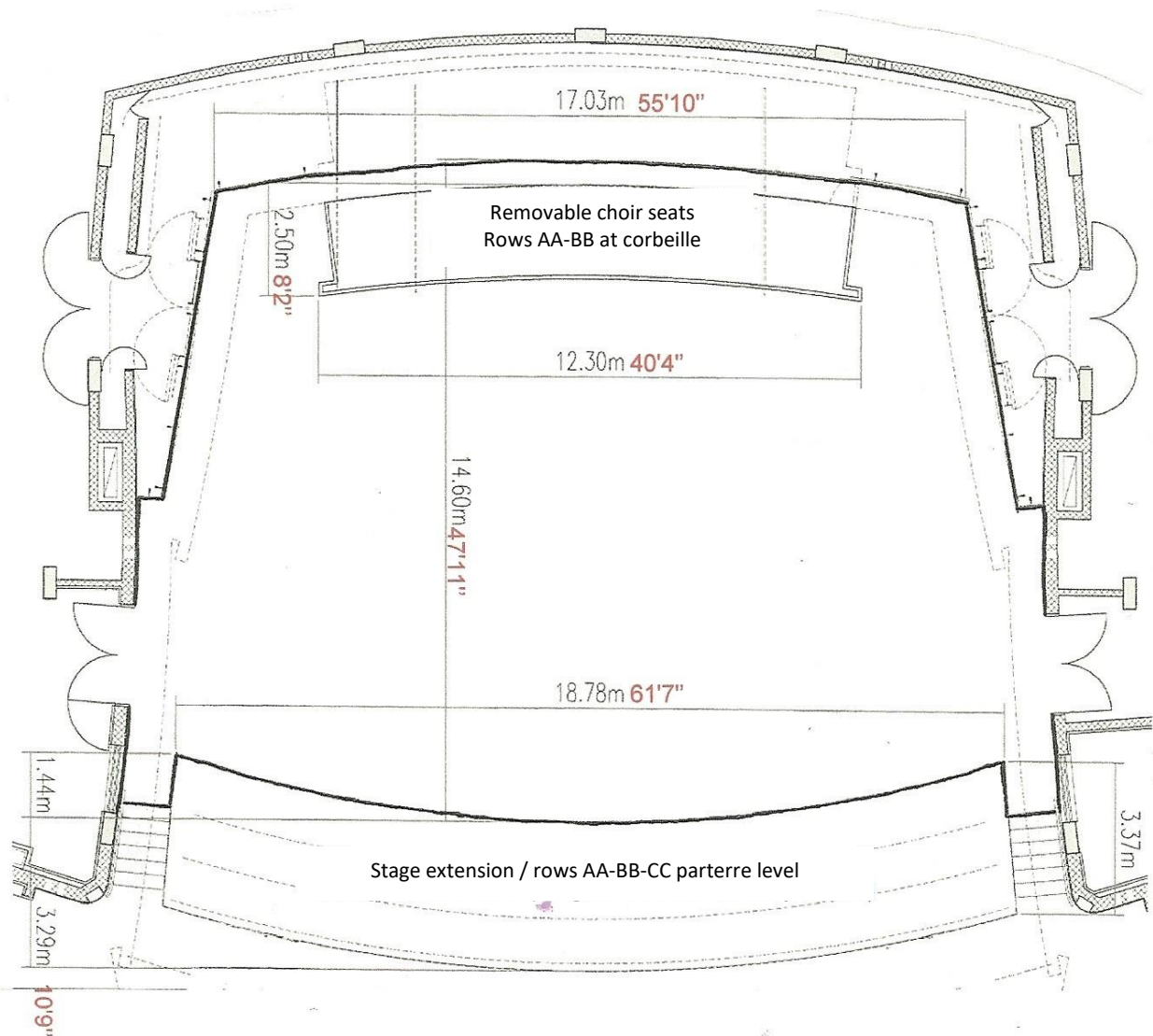
* Air tools as well as electric tools may be loaned on request.

AVAILABLE SERVICES

- WI-FI *(free of charge)* loges, backstage, stage and technical booths. (10 mbps upload / 10 mbps download)
- Long-distance calls from the support and reception areas (\$)

**STAGE SERVICES OPERATION IS DESCRIBED IN DETAIL IN:
USER GUIDE
PLEASE REFER TO IT**

APPENDIX 1 – STAGE PLAN



Stage

Depth (Without removable choir seats.) : 14.60m / 47'11"

Width downstage: 18.78m / 61'7"

Width upstage: 17.03m / 55'10"

Extension

Depth (in centre) : 3.29m / 10'9"

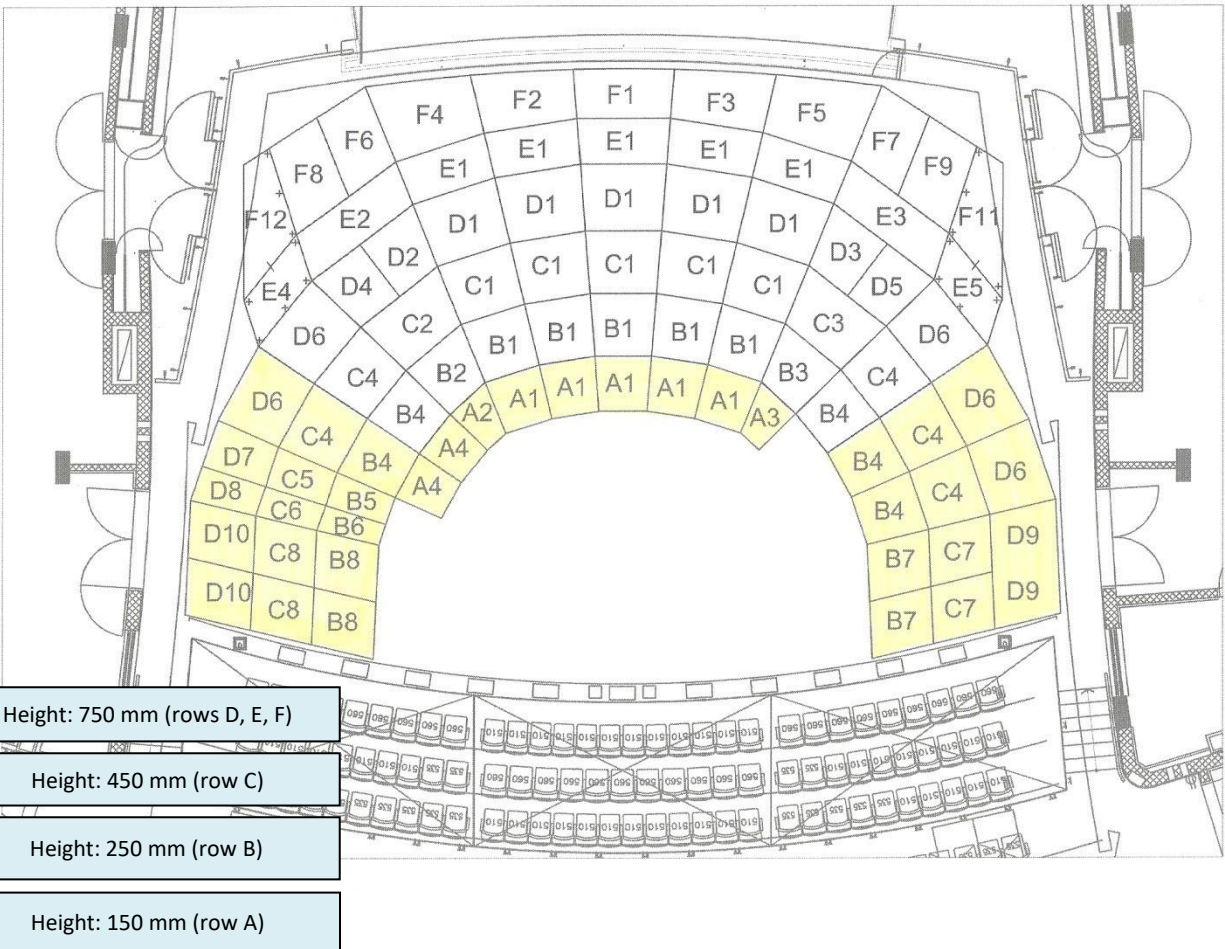
Width : 18.78m / 61'7"

Choir removable seats

Depth : 2.50m / 8'2"

Width : 12.30m / 40'4"

APPENDIX 2A – ORCHESTRA RISERS PLAN



STANDARD STAGE CONFIGURATION BASED ON THE HALL BEING RESET TO 0

Removable rows AA-BB-CC in place in the parterre (therefore, without any stage extension),
removable rows AA-BB removed from the Corbeille (therefore, choir wagon closed)

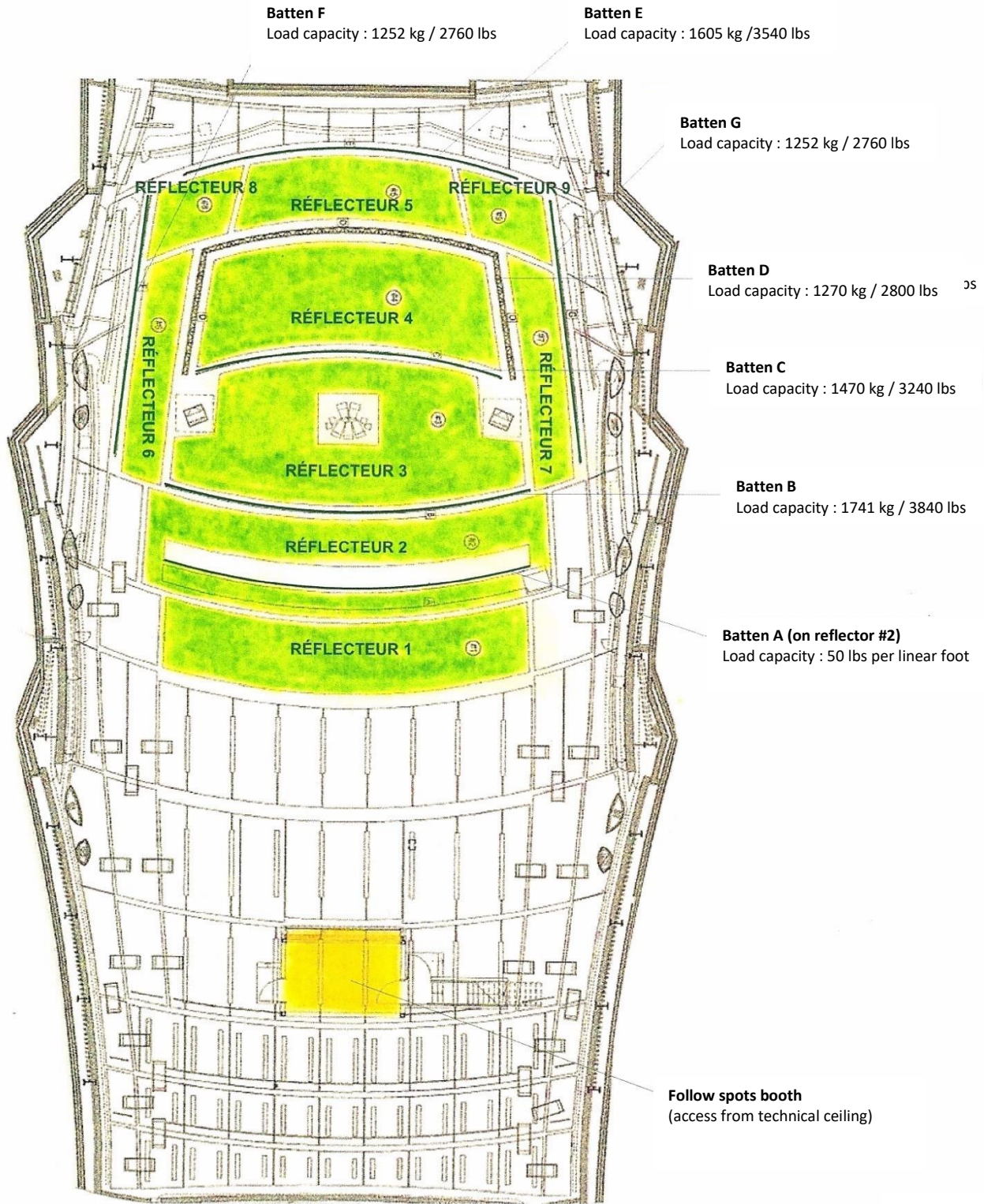
Note: The risers shown in yellow are not part of the basic configuration when the Hall is reset to 0.

APPENDIX 2B – DETAILS / ORCHESTRA RISERS

Quantity available	Type of platform	Number of feet required per unit
5	A1	4
1	A2	4
1	A3	4
2	A4	4
5	B1	4
1	B2	4
1	B3	4
5	B4	4
1	B5	4
1	B6	4
2	B7	4
2	B8	4
5	C1	4
1	C2	5
1	C3	5
5	C4	4
1	C5	4
1	C6	4
2	C7	4
2	C8	4
5	D1	4
1	D2	4
1	D3	4
1	D4	4
1	D5	4
5	D6	4
1	D7	4
1	D8	4
2	D9	4
2	D10	4
5	E1	4
1	E2	6
1	E3	6
1	E4	6
1	E5	6
1	F1	6
1	F2	6
1	F3	6
1	F4	6
1	F5	6
1	F6	4
1	F7	4
1	F8	4
1	F9	4
1	F11	6
1	F12	6

Quantity of feet available	Height
40	150 mm
10	200 mm
110	250 mm
12	300 mm
163	450 mm
173	750 mm
128	950 mm

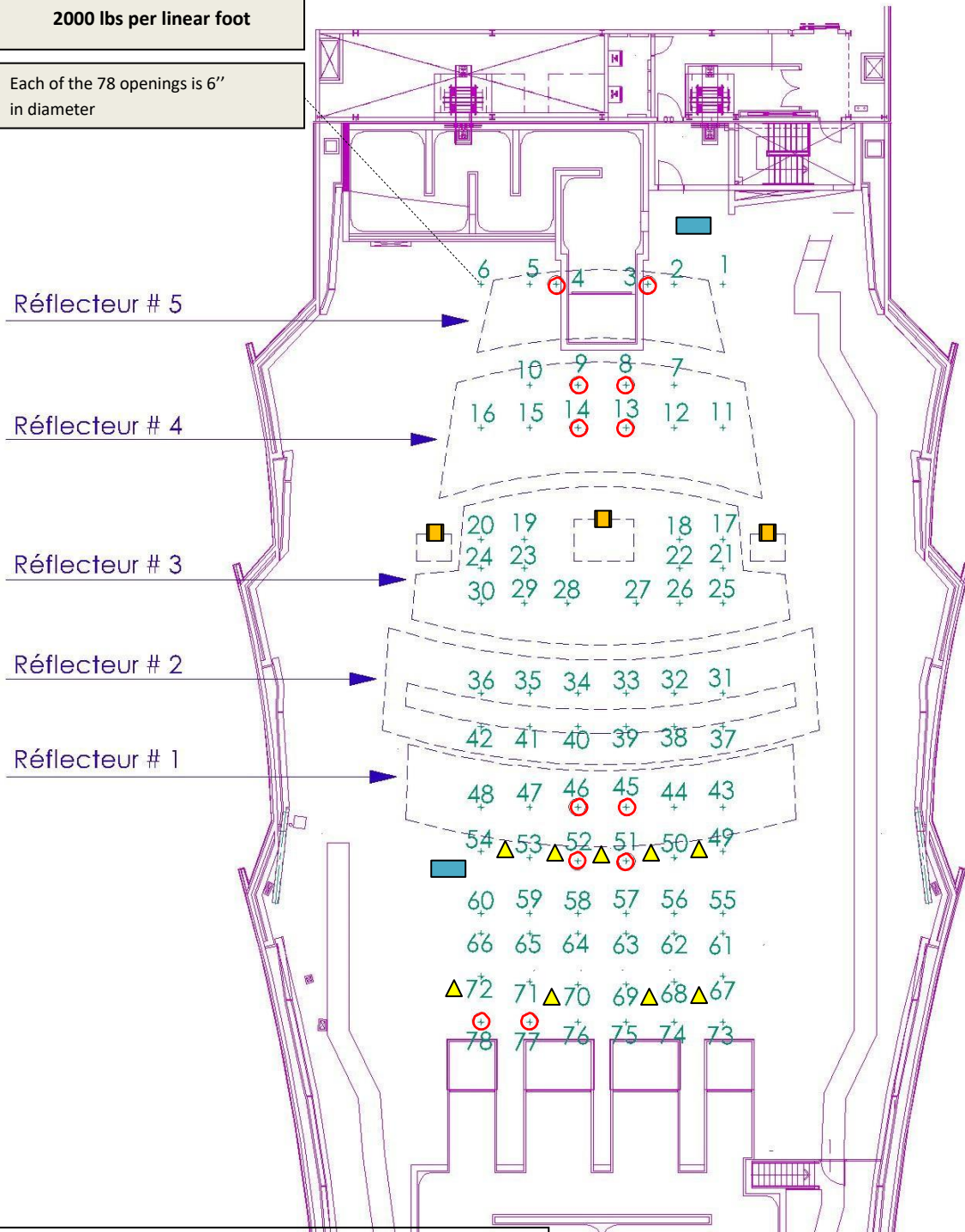
APPENDIX 3 – MOTORIZED BATTEN PLAN



APPENDIX 4 – TECHNICAL CEILING PLAN

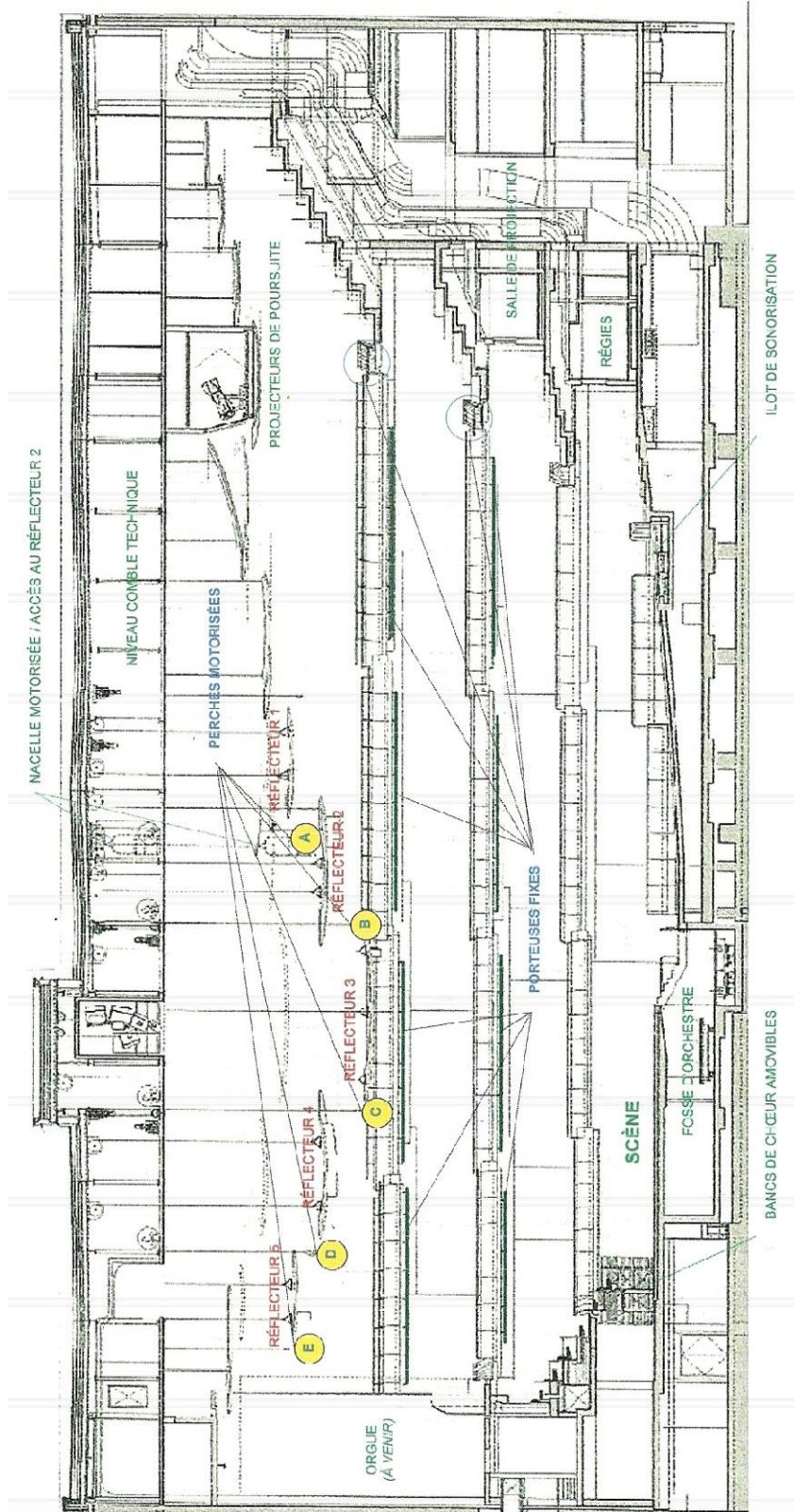
Load capacity of technical ceiling concrete slab:
2000 lbs per linear foot

Each of the 78 openings is 6" in diameter



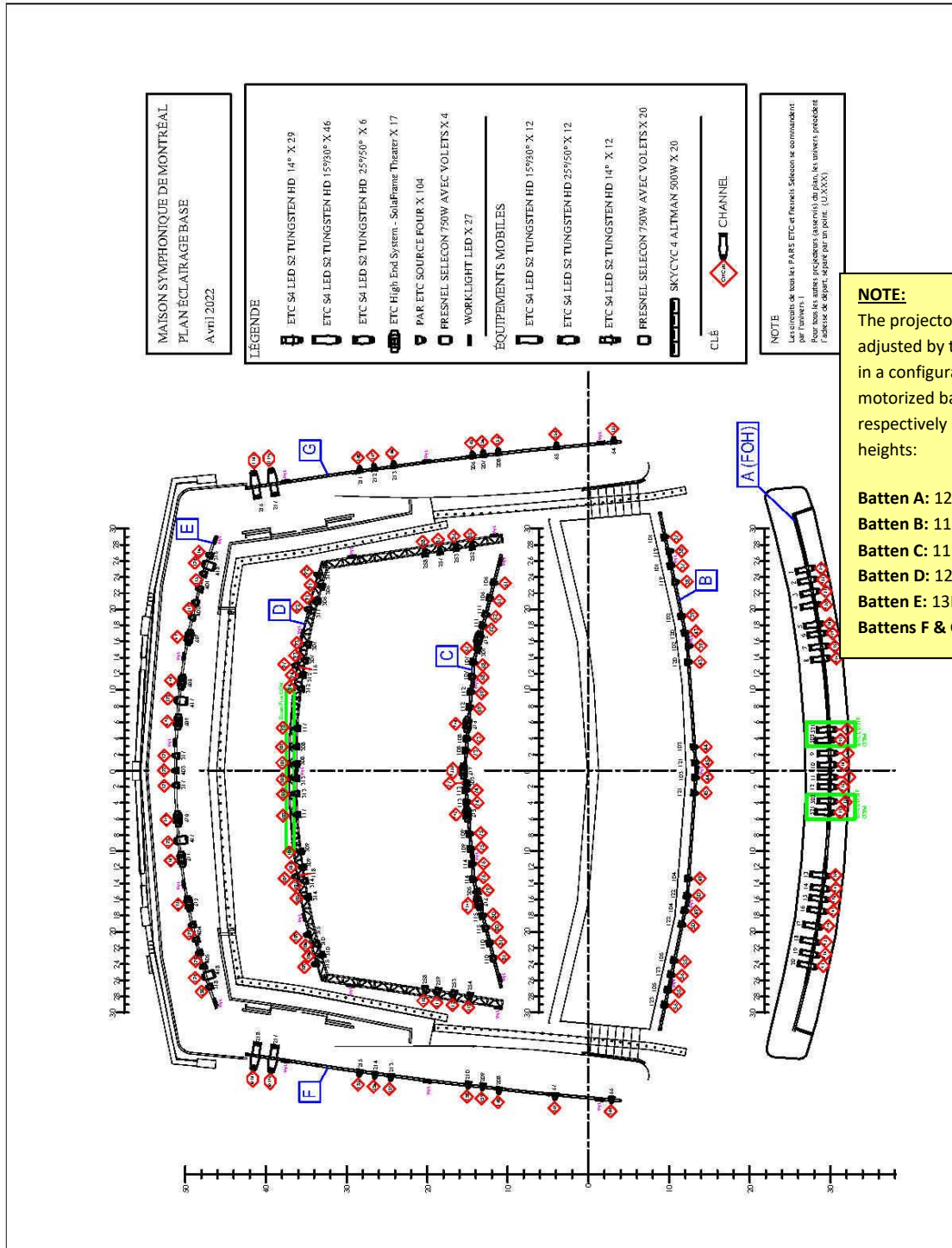
- Openings difficult to access or used for OSM screen (52 and 51)
- ▲ lighting circuits
- Multiple connection panels
- 200A power supply panels

APPENDIX 5 – HALL SECTION PLAN

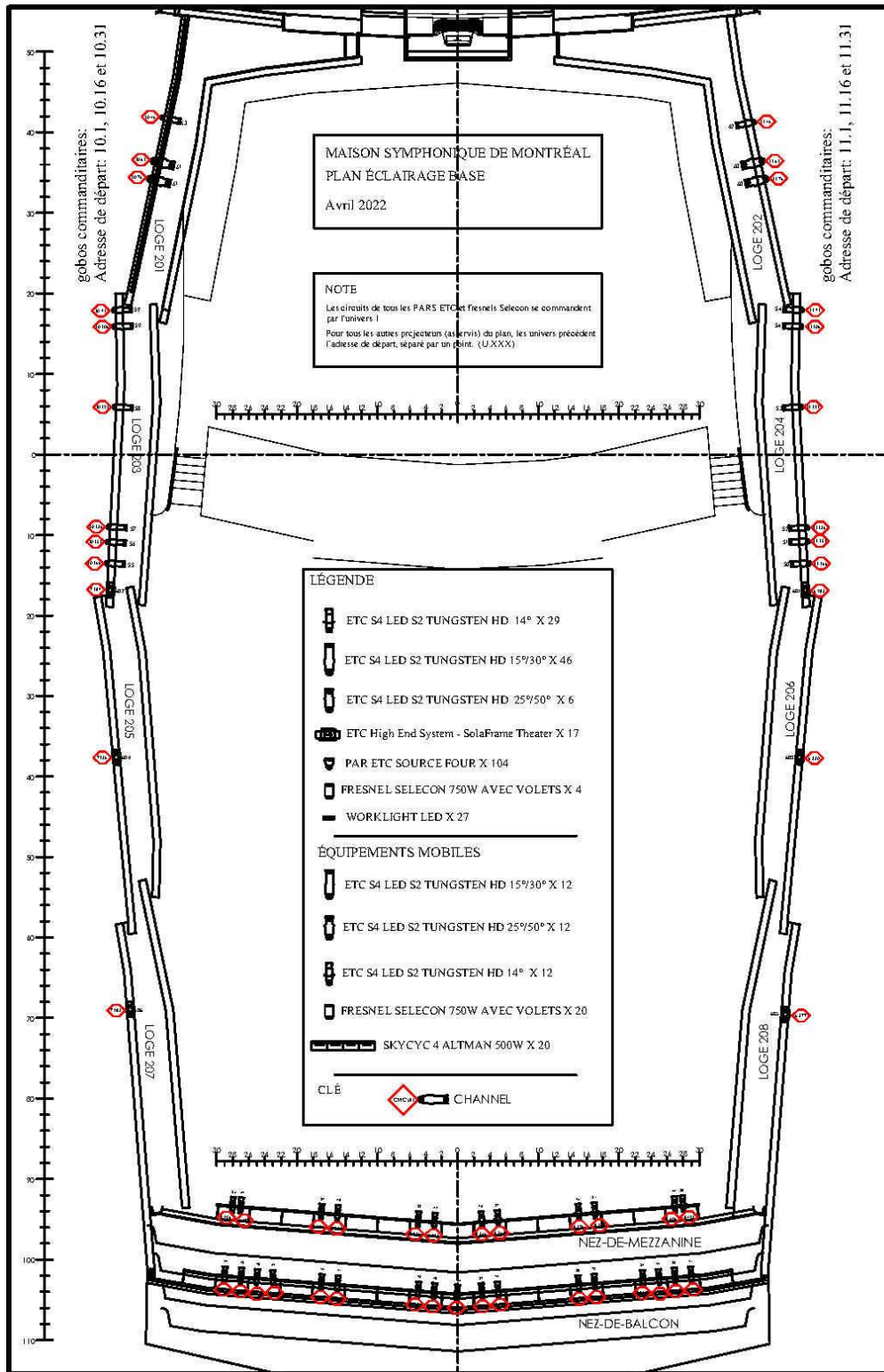


<p>Technical Specifications</p>	<p>MSM-SCE-001</p>	<p>Issue date: 01 08 2011 Revised on: 20 04 2022 Version no. 3.0 (REF VF 12.0)</p>	<p>UNCONTROLLED if printed</p>	<p>Page 22 of 39</p>
--	--------------------	--	---	----------------------

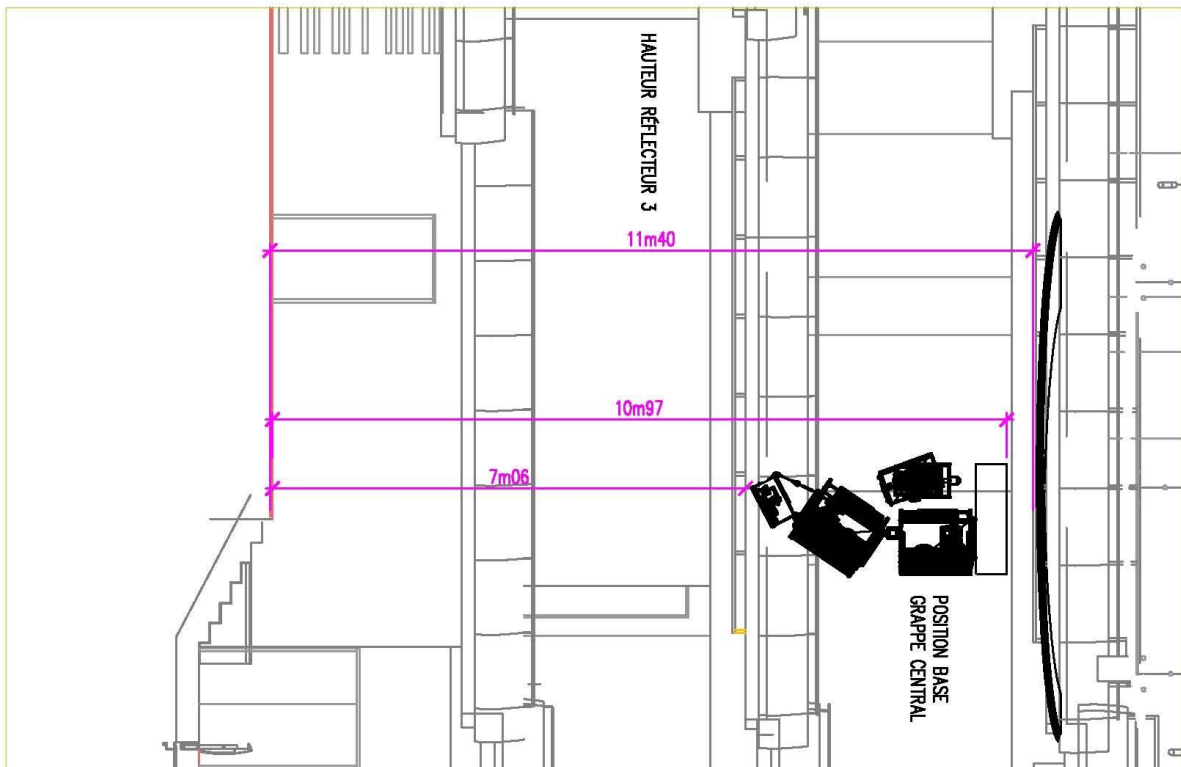
APPENDIX 6A – PERMANENT LIGHTING PLAN (stage)



APPENDIX 6B – PERMANENT LIGHTING PLAN (Hall)



APPENDIX 7A – SPEAKER CLUSTER PLAN (MIDDLE CLUSTER)



SIM :

Two versions of equalizing and delay adjustment (SIM) were created.

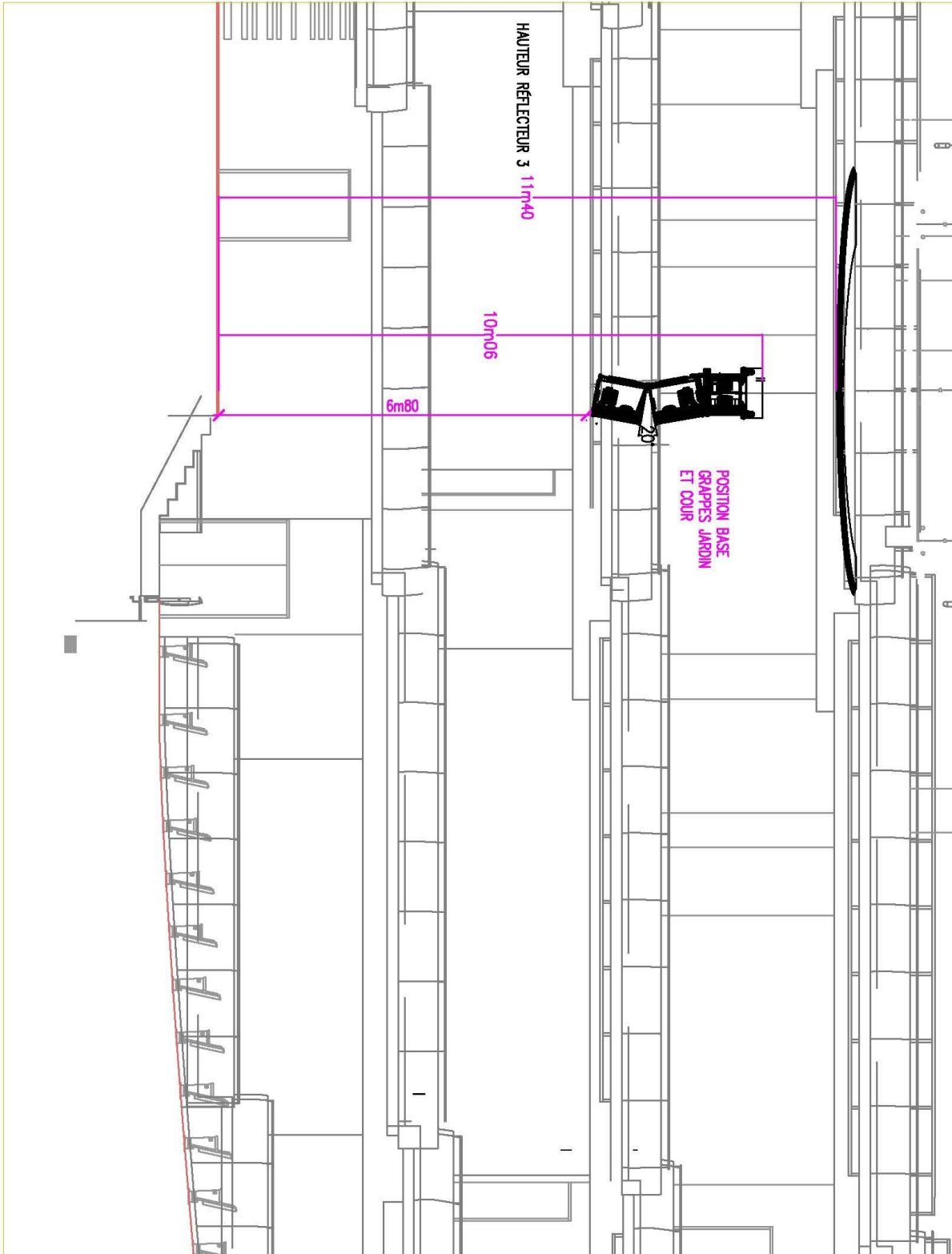
The adjustments include all the components that can be accessed in the Hall (e.g. clusters, ceiling fixtures).

The first version uses the middle cluster as its point of origin. This cluster remains the main source that reaches all the spectators on all sides.

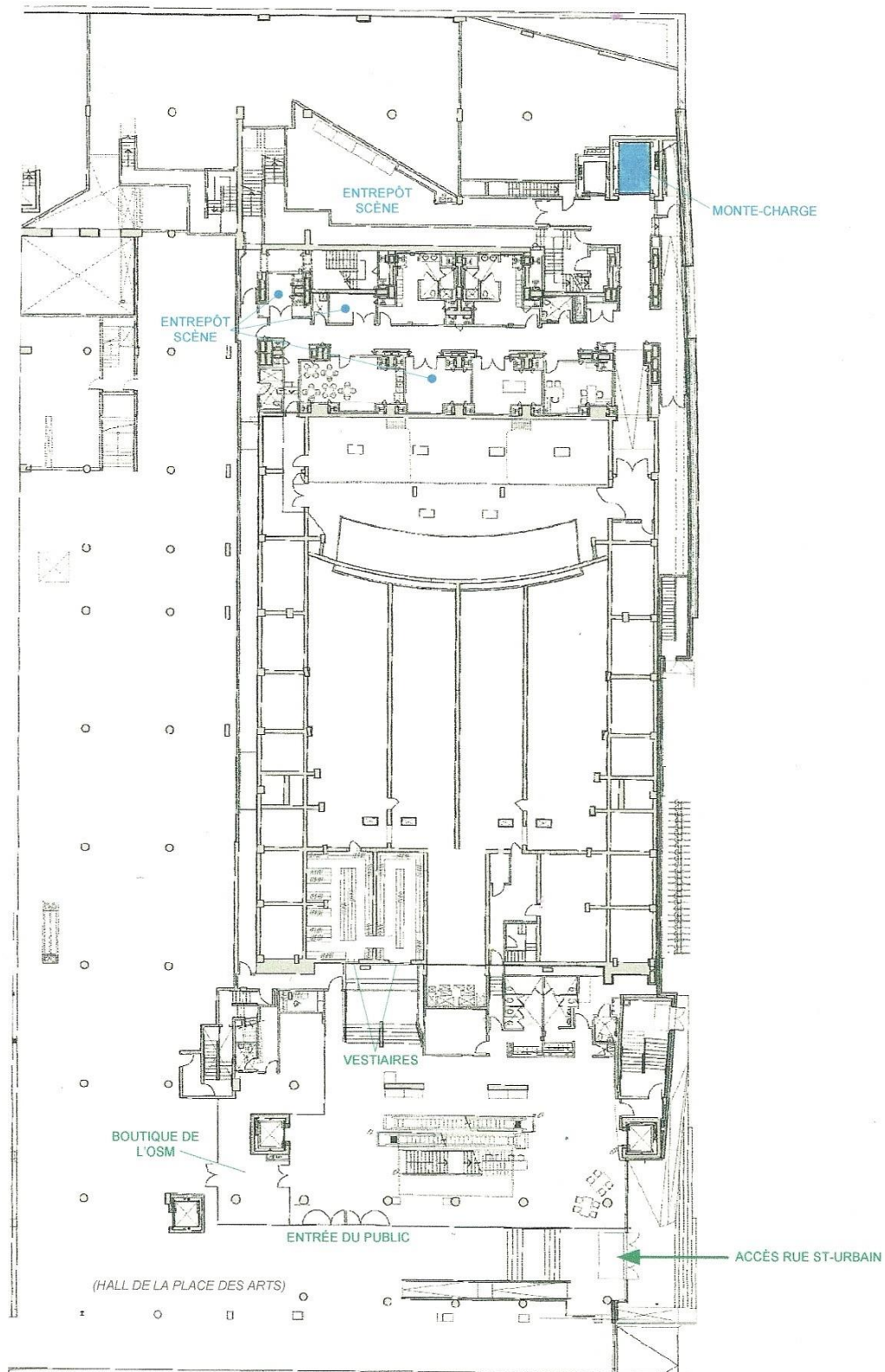
The second version uses the side clusters as point of origin; therefore, in the event the middle cluster cannot be deployed (e.g. during projections), additional components can be added as support (e.g. ceiling fixtures or IC8).



APPENDIX 7B – SPEAKER CLUSTER PLAN (SIDE CLUSTERS)

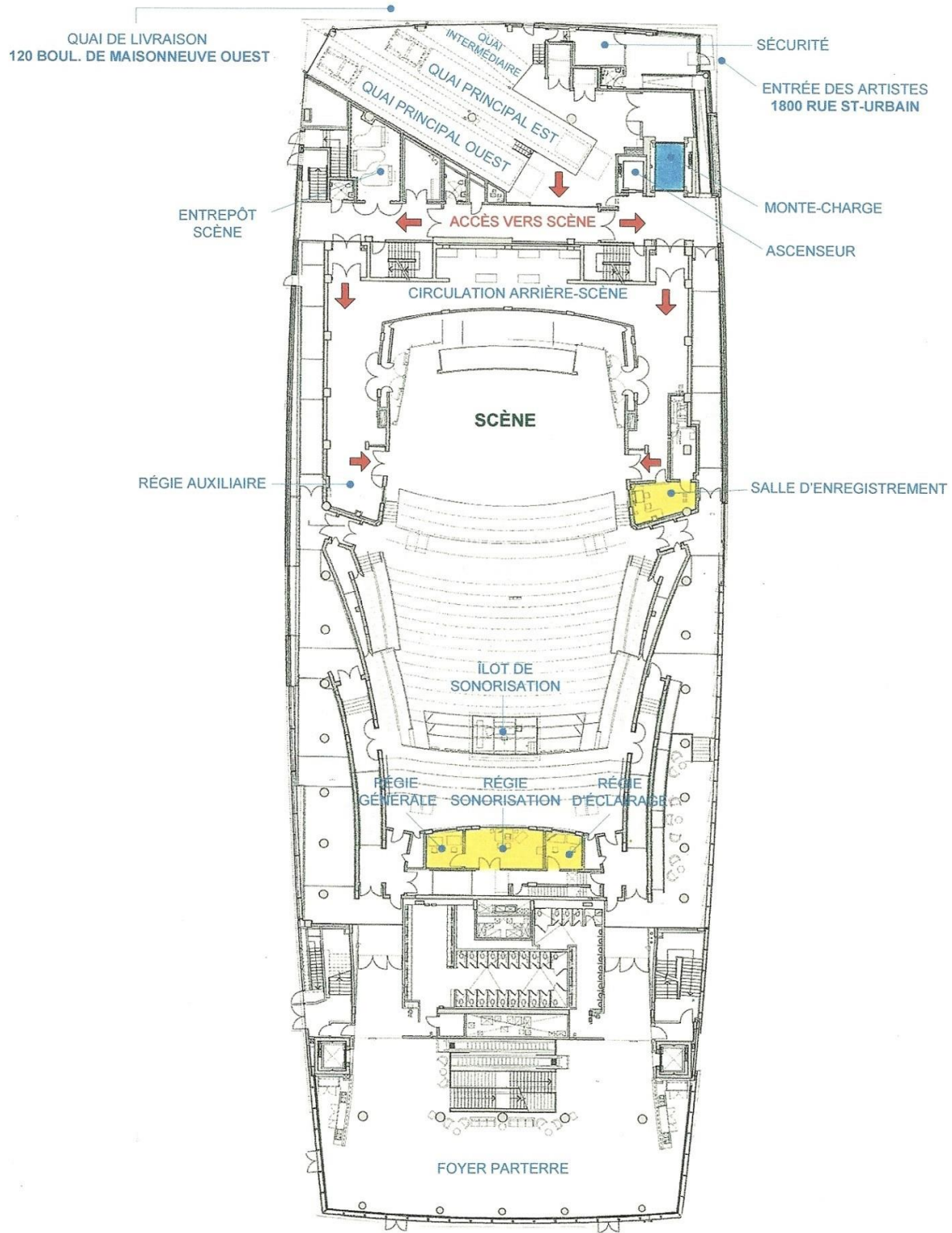


APPENDIX 8A – GRAND FOYER CULTUREL PLAN (1 LEVEL UNDER THE STAGE)

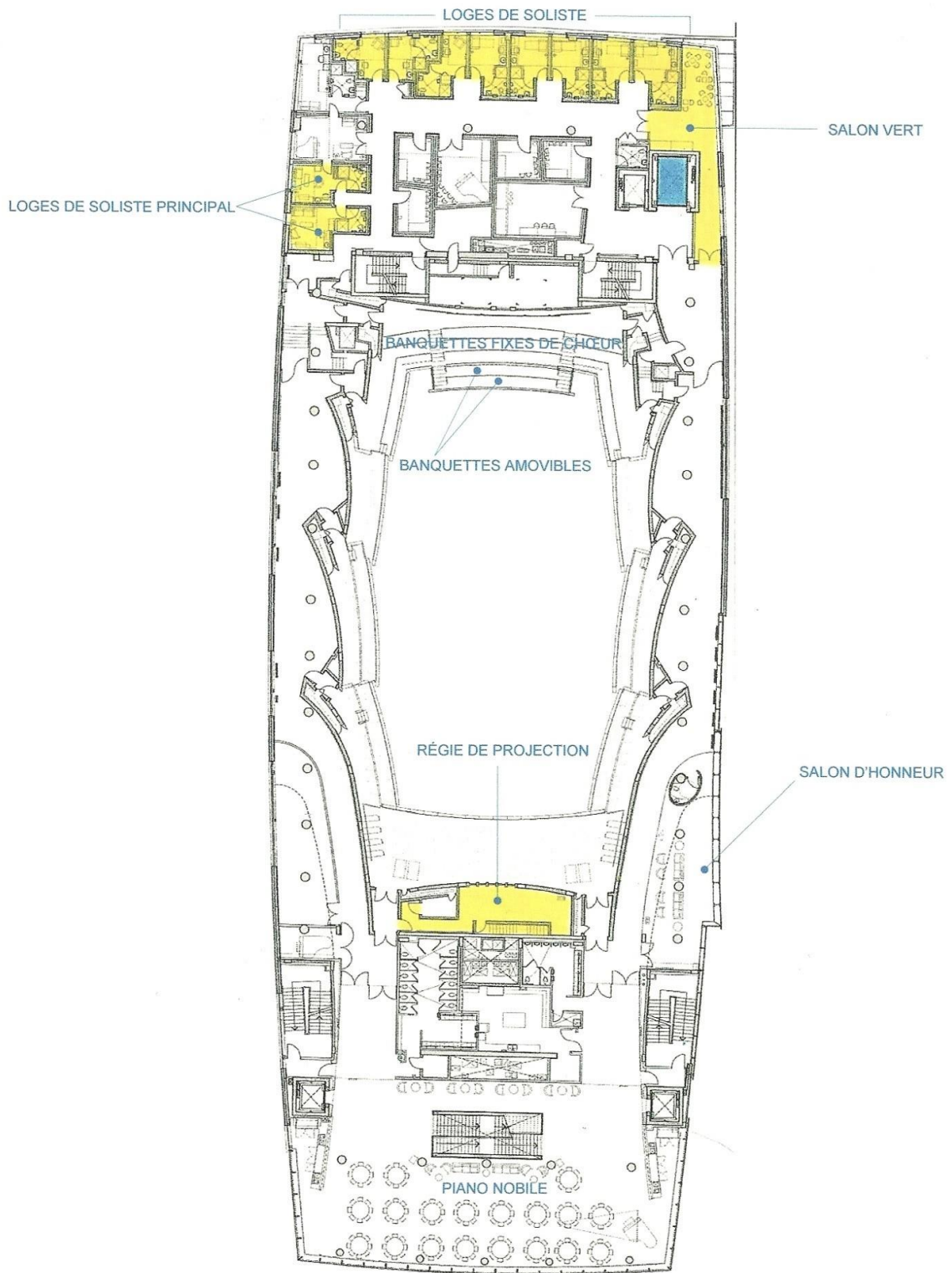


<p>Technical Specifications</p>	<p>MSM-SCE-001</p>	<p>Issue date: 01 08 2011 Revised on: 20 04 2022 Version no. 3.0 (REF VF 12.0)</p>	<p>UNCONTROLLED if printed</p>	<p>Page 27 of 39</p>
--	--------------------	--	---	----------------------

APPENDIX 8B – PARTERRE LEVEL PLAN (STAGE)

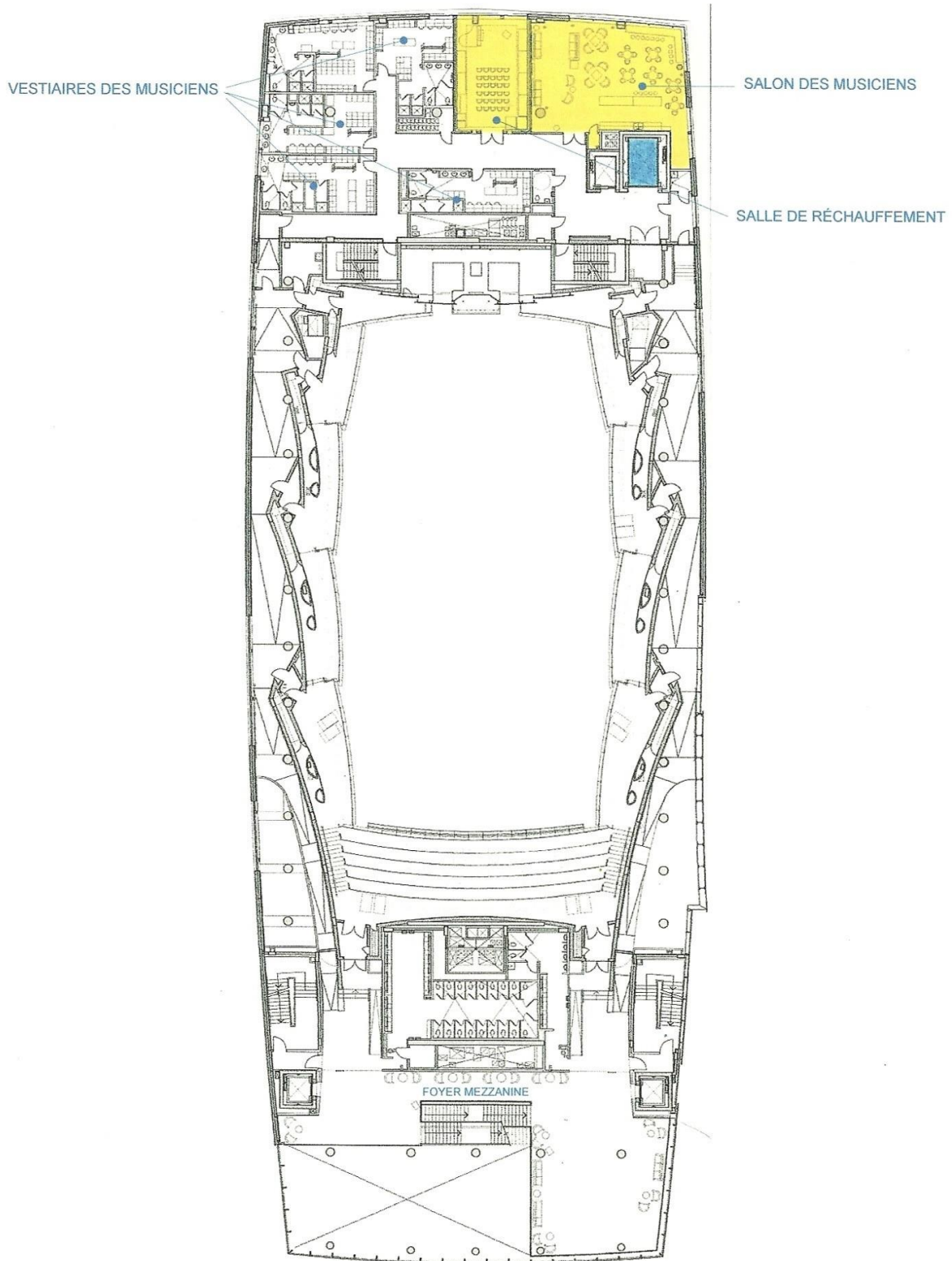


APPENDIX 8C – CORBEILLE LEVEL PLAN (ONE LEVEL ABOVE THE STAGE)

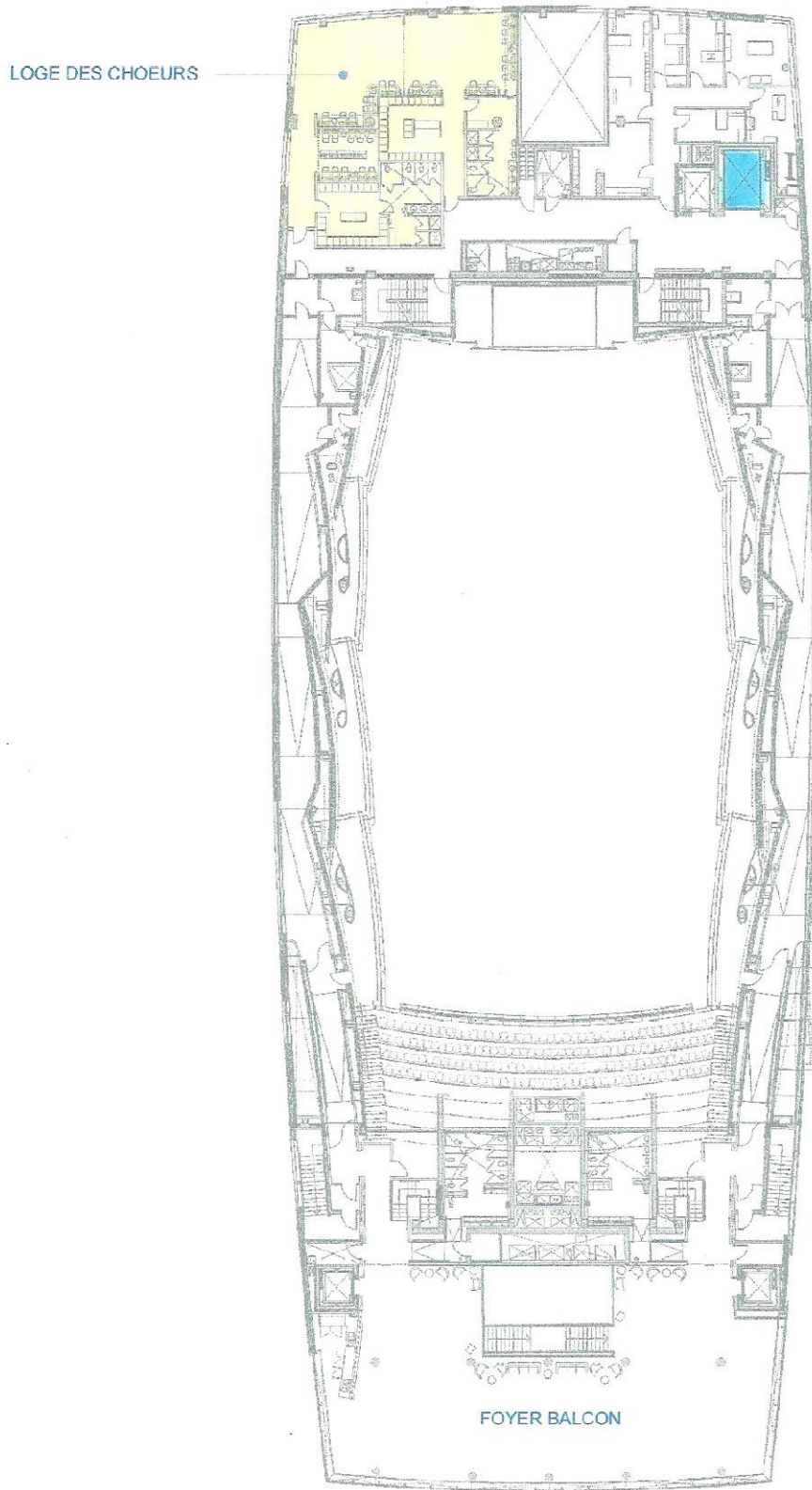


<p>Technical Specifications</p>	<p>MSM-SCE-001</p>	<p>Issue date: 01 08 2011 Revised on: 20 04 2022 Version no. 3.0 (REF VF 12.0)</p>	<p>UNCONTROLLED if printed</p>	<p>Page 29 of 39</p>
--	--------------------	--	---	----------------------

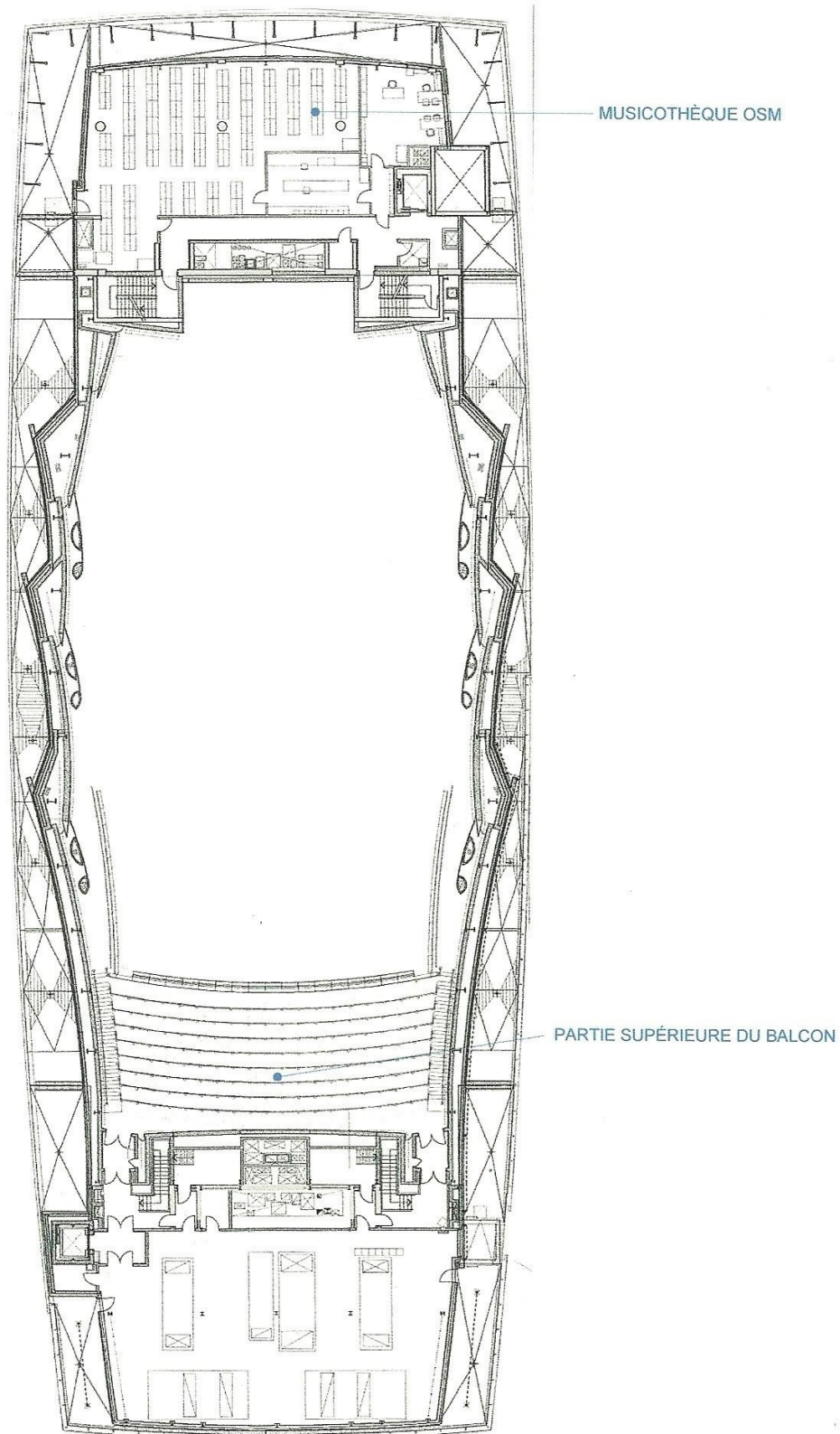
APPENDIX 8D – MEZZANINE LEVEL PLAN (TWO LEVELS BELOW THE STAGE)



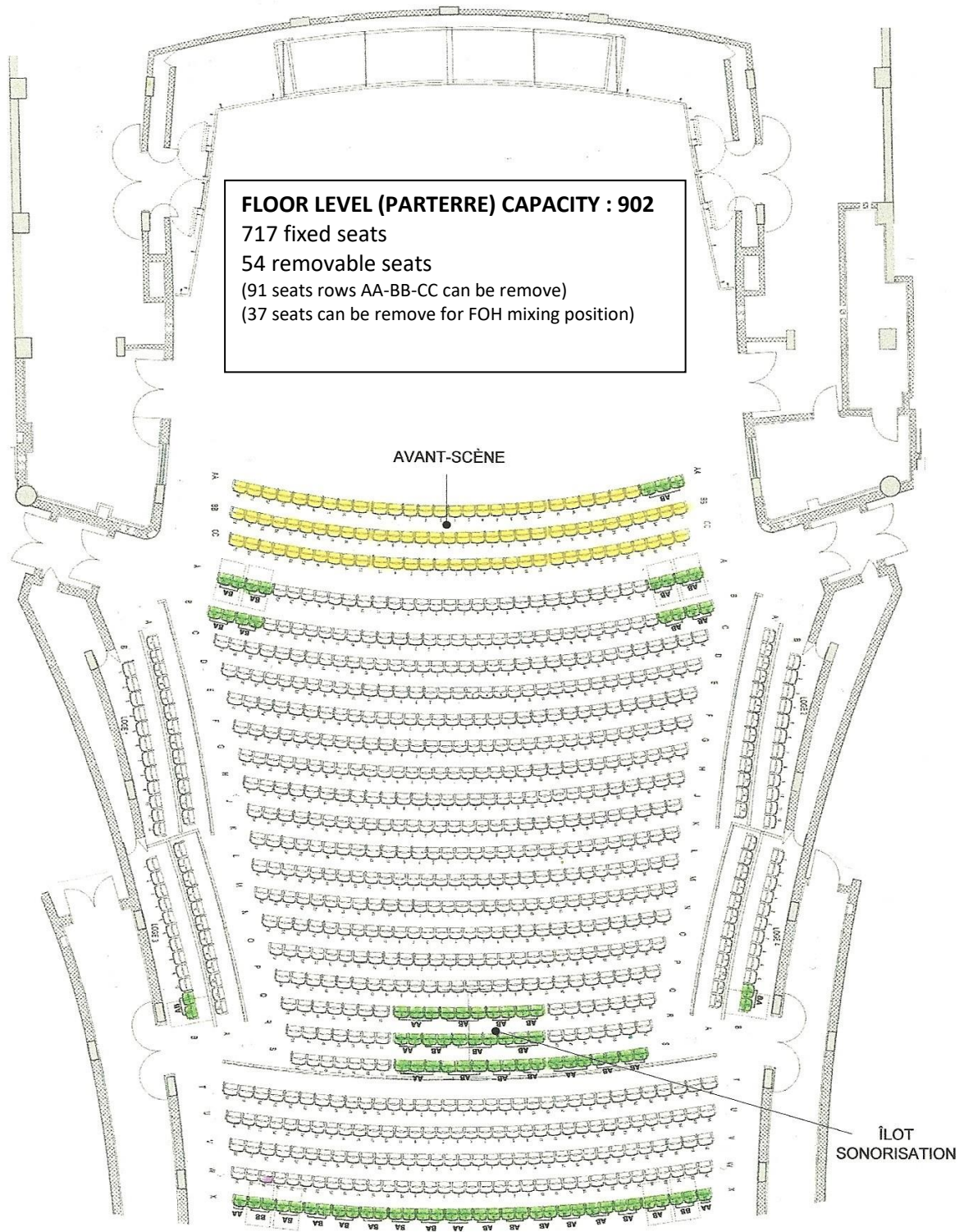
APPENDIX 8E – LOWER BALCONY LEVEL PLAN (THREE LEVELS ABOVE THE STAGE)



APPENDIX 8F – UPPER BALCONY LEVEL PLAN (FOUR LEVELS ABOVE THE STAGE)



APPENDIX 9A – SEATING PLAN / PARTERRE

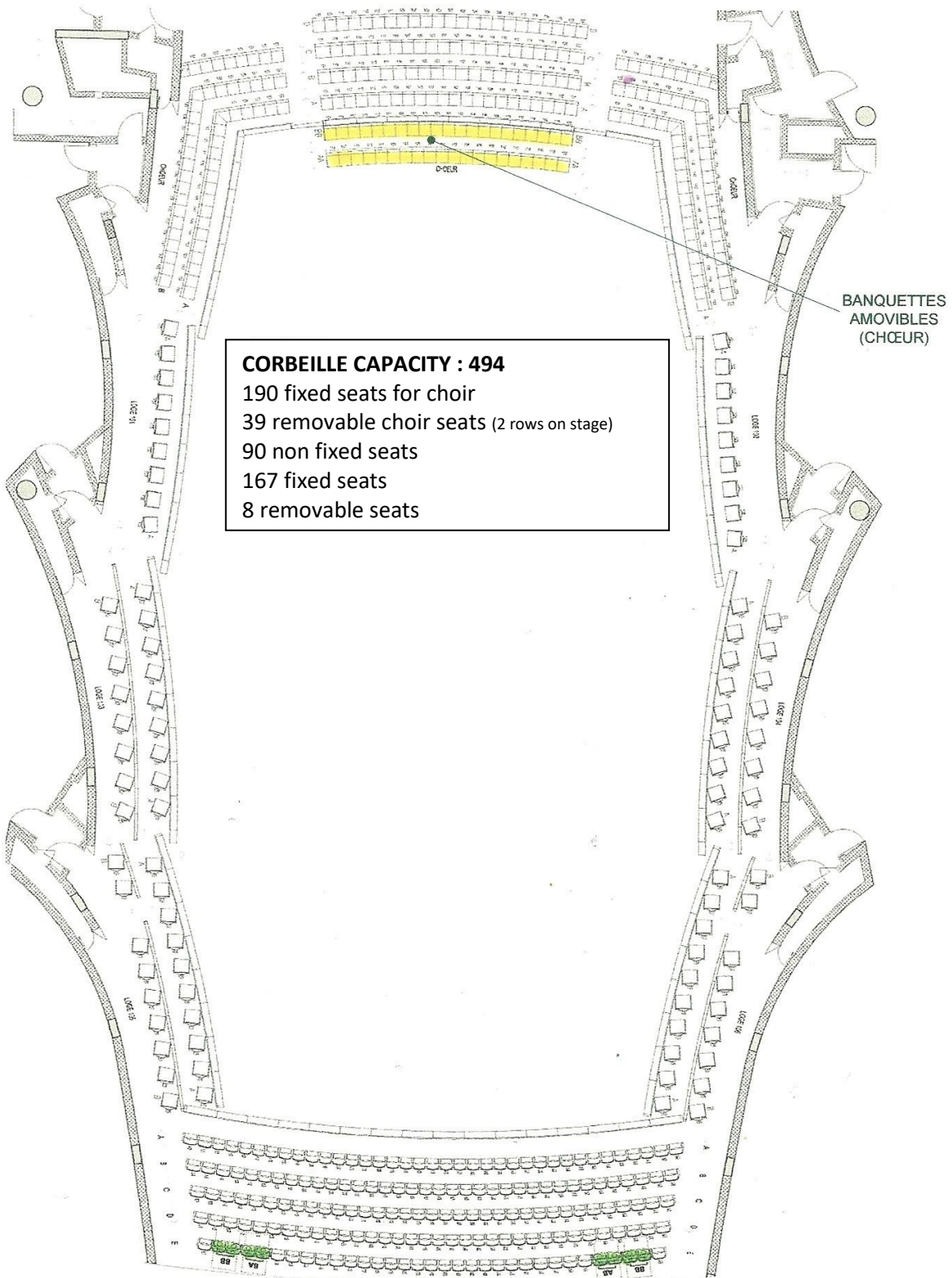


FLOOR LEVEL (PARTERRE) CAPACITY : 902
 717 fixed seats
 54 removable seats
 (91 seats rows AA-BB-CC can be remove)
 (37 seats can be remove for FOH mixing position)

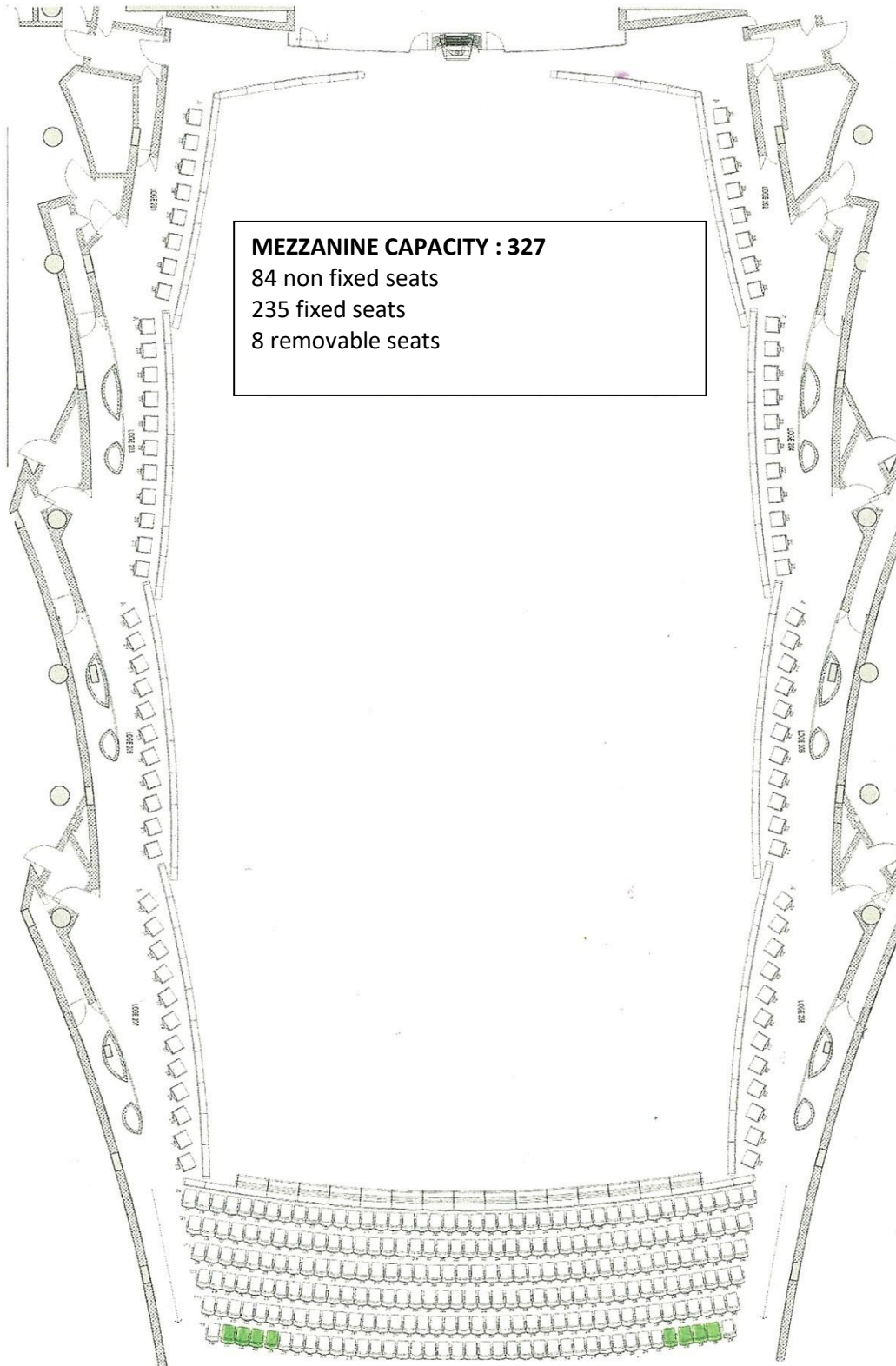
AVANT-SCÈNE

ÎLOT
 SONORISATION

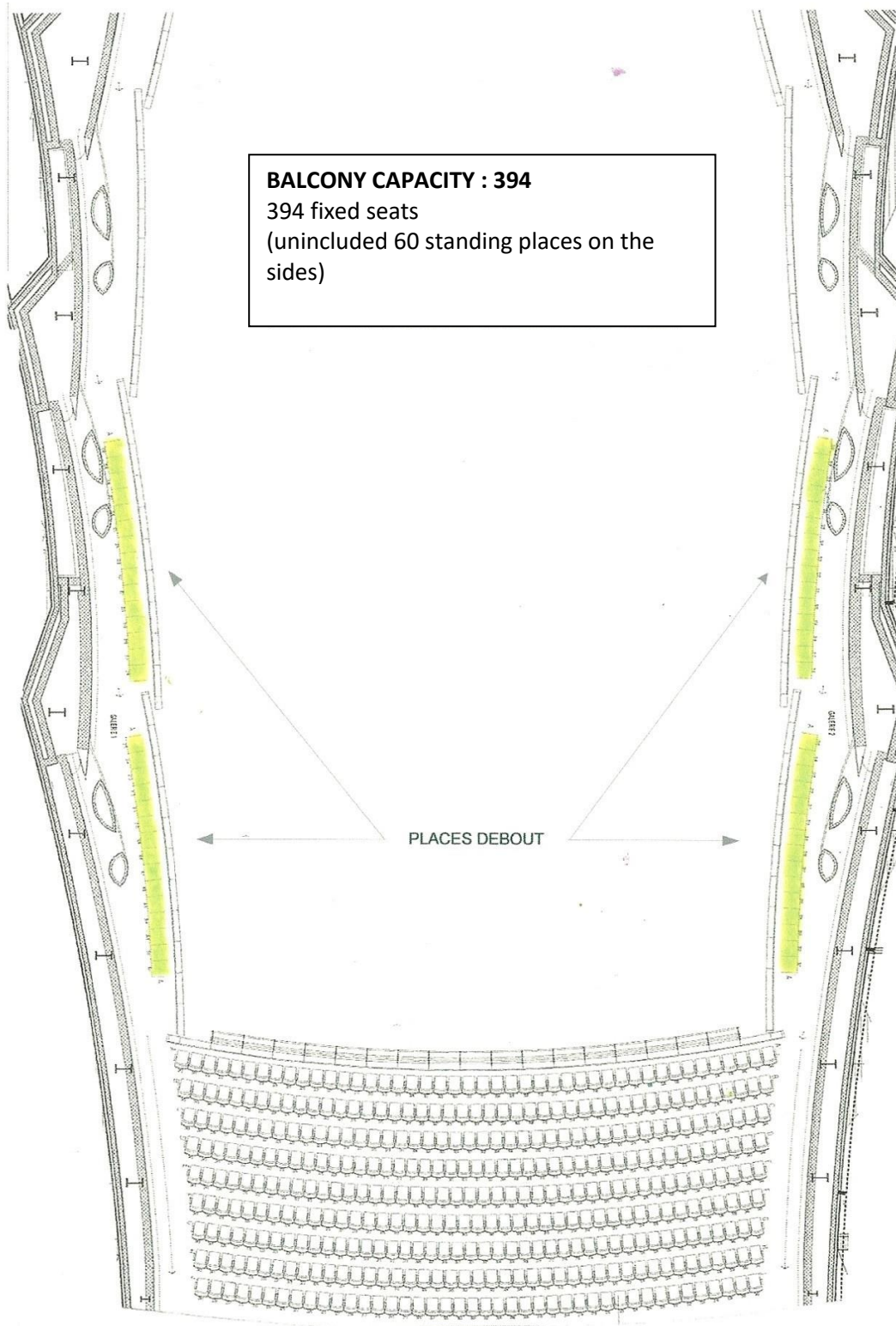
APPENDIX 9B – SEATING PLAN / CORBEILLE



APPENDIX 9C – SEATING PLAN / MEZZANINE



APPENDIX 9D – SEATING PLAN / BALCONY



APPENDIX 10 – PIANOS AND ORGAN CHESTRA EQUIPMENT

To preserve the exceptional quality of the pianos and organ at the Maison symphonique de Montréal, based on their special use for classical music concerts, the pianos and organ used by the Orchestre symphonique de Montréal and Place des Arts pianos are tuned only to 442 Hz, and cannot be changed.

OSM PIANOS

- Steinway & Sons, Model D New York, High Gloss Polyester, serial no. 589564
- Steinway & Sons, Model D Hamburg, serial no. 590071
- Steinway & Sons, Model D Hamburg, 9' 1997, serial no. 545119 / Foyer Allegro

Quebec organizations specialized in classical music may use OSM pianos for concerts at the Maison symphonique de Montréal; however, they must first submit a request in writing to the OSM (mcbriand@osm.ca).

They must also indicate the following in their **concert program page** and send a copy to the OSM:

The Steinway piano used for this concert was generously provided to the Orchestre symphonique de Montréal by patron David B. Sela, who agreed to lend it to _____

PDA PIANOS

- Concert Hall / Steinway, Model D, Hamburg, 9' #590097
- Choir dressing room / Yamaha Premier Grand 6.3' #6247366
- Conductor's rehearsal room / Yamaha C5 Conservatory 6.7' #6326633
- Principal soloist's dressing room 2 / Yamaha U1 48" #6333585
- Rehearsal room 1 / Yamaha U1 48" #6333629

OSM ORGAN

Quebec organizations specializing in classical music may rent the Grand Orgue Pierre-Béique for performances at the Maison symphonique de Montréal. To do so, they must first send a written request to the OSM (email mcbriand@osm.ca), and confirm the repertoire to be performed as well as the name of the featured organist. Upon approval, a rental contract will drawn up and signed.

The following acknowledgement must appear on the lessee's **concert program page** and a copy thereof sent to the OSM:

The Grand Orgue Pierre-Béique has been generously gifted to the OSM by Ms. Jacqueline Desmarais.

Technical Specifications	MSM-SCE-001	Issue date: 01 08 2011 Revised on: 20 04 2022 Version no. 3.0 (REF VF 12.0)	UNCONTROLLED if printed	Page 37 of 39
---------------------------------	-------------	---	----------------------------	---------------

APPENDIX 11 – ORCHESTRA EQUIPMENT

ORCHESTRA EQUIPMENT AVAILABLE ON STAGE:

1	conductor music stand
1	conductor podium
151	musician chairs
6	stools for percussionists
100	musicians music stands
7	trolleys (music stands)
100	music stand lights
5	spider power supplies
20	platforms for double basses
16	6' tables
4	4' tables
2	table trolleys
100	black chairs for the backstage
10	chair trolleys

APPENDIX 12 – OSM PROJECTION EQUIPMENT

SCREEN / motorized batten D

DRAPER: 478653-1: PARAGON/V ELECTRIC SCREEN
270" DIAGONAL HDTV (16:9) *XT1000V MATT WHITE
VIEWING AREA:133H X 236W
TOTAL TOP DROP = 12" BLACK
BLACK CASE
115 VAC MOTOR *HOOK UP LEFT

SCREEN / BALCONY LEVEL

DRAPER: 478653-2: TARGA ELECTRIC SCREEN UNIT
220" DIAGONAL HDTV (16:9) *XT1000E MATT WHITE *VIDEO MASKING
VIEWING AREA: 106H X 188W
OVERALL AREA: 111H X 192W
LARGE BLACK CASE
L1-115V MOTOR *HOOK UP LEFT

PROJECTOR / Projection booth, corbeille level

BARCO: RLMW14: 14,000 lumen, WUXGA, 3-chip DLP projector + LEN

PROJECTOR / Follow room reflector level

BARCO: RLMW8: DLP WUXGA projector, 8,000 lumen + LENS

<p>The above screens and projectors are exclusively owned by the Orchestre symphonique de Montréal; if you wish to lease them, you must submit a request in writing to the OSM production department.</p>

APPENDIX 13 – REQUIRED PERSONAL PROTECTIVE EQUIPMENT

Any worker required to carry out operations at one of these locations:

BATTEN A (LOCATED IN REFLECTOR 2 AND ACCESSIBLE VIA THE AERIAL LIFT BASKET)

FIXED BATTENS (LOCATED UNDER THE MEZZANINE AND BALCONY LEVEL DRESSING ROOMS)

FIXED BATTENS (LOCATED ACROSS FROM THE BALCONY – MEZZANINE AND BALCONY LEVELS)

Or

USE HOISTING EQUIPMENT (40' GENIE LIFT or 14' LIFTPOD)

Must:

- Have taken recognized training for height work – Certificate required
- Have the personal protective equipment listed below

1 harness – CSA Z259.10 (ADLP)	1 6' <u>adjustable</u> strap	1 hard hat – CSA Z94.01-05 (type 1)	
			
Safety Direct #MH2011102Q	Safety Direct #MLSW306000	Vertex Best A10B	
Or			
DBI Sala #1110725C			

NO PERSONAL PROTECTIVE EQUIPMENT IS SUPPLIED BY SNC-LAVALIN O&M

- Any workers without the required equipment will not be permitted to access the locations identified above
- Work methods and procedures are available on site and handed out to workers.